

MIG/MAG WELDING

TPLUS 26

trafimet
distribution

trafimet
welding & cutting



3 - 5 m
10' - 16,4'

1.4 Kg
3,09 lb

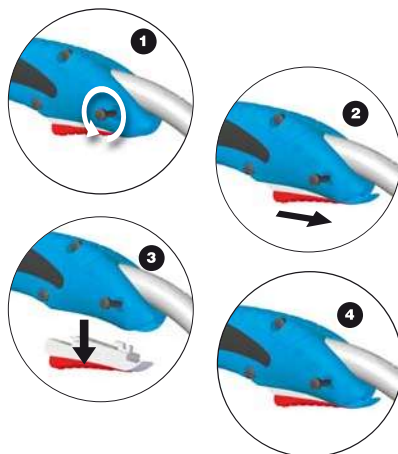
1 m
3,28'

V peak 113

0.8 - 1.2 mm
.030" - .045"

X 290A CO₂
260A Mix

CODE	↔	Ⓜ
MA3323	3 m / 10'	EURO
MA3324	4 m / 12'	EURO
MA3325	5 m / 16,4'	EURO

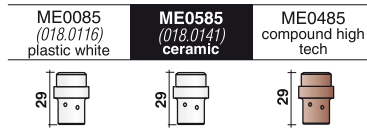


- EN Quick Trigger Replacement
- FR Remplacement rapide de la gâchette
- ES Sustitución rápida del botón
- PT Substituição rápida do botão



EN 60974-7





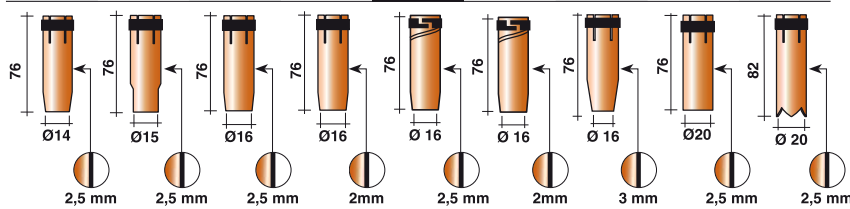
Ø mm	Ø in	Cu	Cu-Ni	Cu for Al	CuCrZr	Triangular Cu
0,6	.023	MD0009-06 (140.0005)	MD0009-36		MD0009-76	-
0,8	.030	MD0009-08 (140.0051)	MD0009-38	MD0009-58 (141.0001)	MD0009-78 (140.0054)	MD1009-08
0,9	.035	MD0009-09 (140.0169)				
1,0	.040	MD0009-10 (140.0242)	MD0009-40	MD0009-60 (141.0006)	MD0009-80 (140.0245)	MD1009-10
1,2	.045	MD0009-12 (140.0379)	MD0009-42	MD0009-62 (141.0010)	MD0009-82 (140.0382)	MD1009-12
1,4	.052	MD0009-14	-	MD0009-44	MD0009-84	-
1,6	1/16	MD0009-16 (140.0555)	MD0009-46	MD0009-66	MD0009-86	-



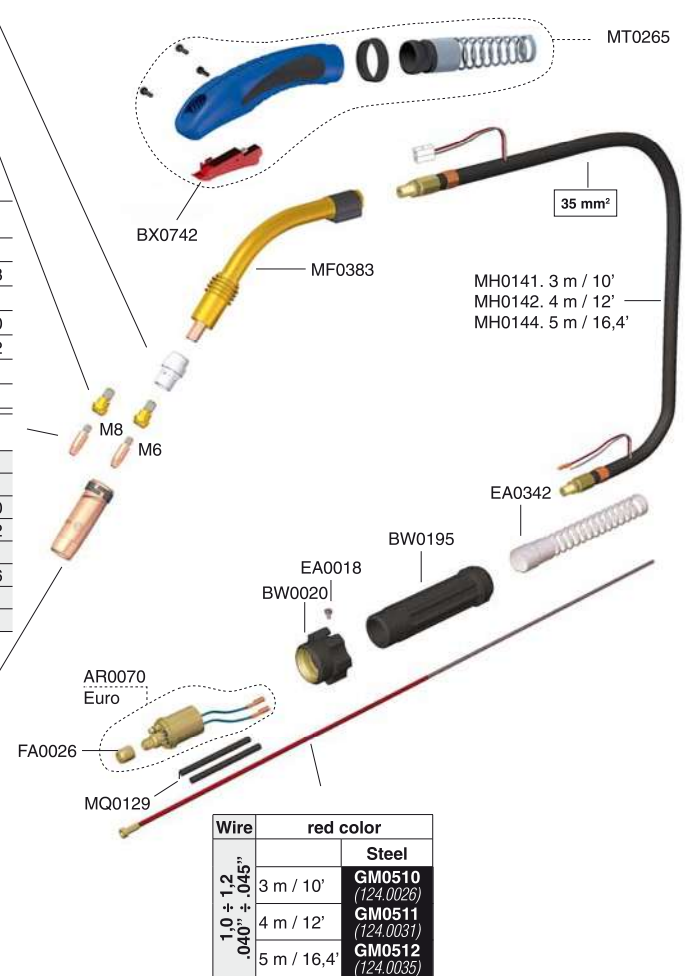
Ø mm	Ø in	Cu	Cu-Ni	Cu for Al	CuCrZr	Triangular Cu	Triangular CuCrZr
0,8	.030	MD0005-08 (140.0114)	MD0005-38	MD0005-58 (141.0003)	MD0005-78 (140.0117)		
0,9	.035	MD0005-09	-	MD0005-59	-		
1,0	.040	MD0005-10 (140.0313)	MD0005-40	MD0005-60 (141.0008)	MD0005-80 (140.0316)	MD1005-10	MD1005-80
1,2	.045	MD0005-12 (140.0442)	MD0005-42	MD0005-62 (141.0015)	MD0005-82 (140.0445)	MD1005-12	MD1005-82
1,4	.052	MD0005-14	-	MD0005-44	MD0005-84	-	-
1,6	1/16	MD0005-16 (140.0587)	MD0005-46	MD0005-66 (141.0022)	MD0005-86 (140.0590)	MD1005-16	MD1005-86
2,0	5/64	MD0005-20 (140.0653)		MD0005-70	-	MD0005-90	-
2,4	3/32	MD0005-24 (140.0677)		MD0005-74	-	MD0005-94	-



MC0290 (145.0132)	MC0292 -	MC0268 (145.0085)	MC0276 light	MC0568 quick release	MC0576 light quick release	MC0340 heavy duty	MC0291 (145.0051)	MC0293 (145.0179)
-------------------	----------	-------------------	--------------	-----------------------------	----------------------------	-------------------	-------------------	-------------------



STANDARD (REF)



Wire	red color
1,0 ± 1,2 .040 ± .045"	Steel
	GM0510 (124.0026)
	GM0511 (124.0031)
	GM0512 (124.0035)
	3 m / 10'
	4 m / 12'
	5 m / 16,4'