


MIG/MAG WELDING

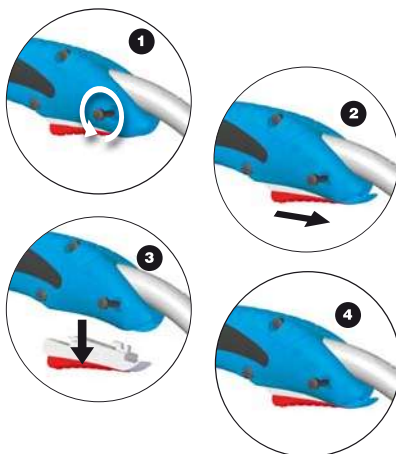
TPLUS 25

trafimet
distribution

trafimet
welding & cutting

	 3 - 5 m 10' - 16,4'	 1.2 Kg 2,76 lb	 1 m 3,3'
V peak	113	Ø mm	0,8 - 1,2 mm .030" - .045"
X	60%	X	230A CO ₂ 220A Mix

CODE	↔	
MA3233	3 m / 10'	EURO
MA3234	4 m / 12'	EURO
MA3235	5 m / 16,4'	EURO



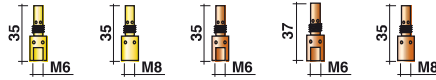
- EN** Quick Trigger Replacement
- FR** Remplacement rapide de la gâchette
- ES** Sustitución rápida del botón
- PT** Substituição rápida do botão



EN 60974-7



ME0216	ME0240	ME0016 <i>(142.0001)</i> copper	ME0060	ME0040
brass	brass	copper	copper	copper



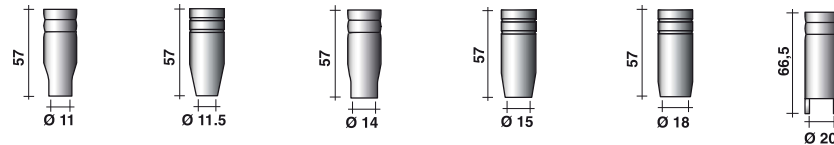
Ø mm	Ø in	Cu	Cu-Ni	Cu for Al	CuCrZr	Triangular Cu
0,6	.023	MD0009-06 (140.0005)	MD0009-36		MD0009-76	-
0,8	.030	MD0009-08 (140.0051)	MD0009-38	MD0009-58 (141.0001)	MD0009-78 (140.0054)	MD1009-08
0,9	.035	MD0009-09 (140.0169)				
1,0	.040	MD0009-10 (140.0242)	MD0009-40	MD0009-60 (141.0006)	MD0009-80 (140.0245)	MD1009-10
1,2	.045	MD0009-12 (140.0379)	MD0009-42	MD0009-62 (141.0010)	MD0009-82 (140.0382)	MD1009-12
1,4	.052	MD0009-14	-	MD0009-44	-	MD0009-84
1,6	1/16	MD0009-16 (140.0555)	MD0009-46	MD0009-66	-	MD0009-86



Ø mm	Ø in	Cu	Cu-Ni	Cu for Al	CuCrZr	Triangular Cu	Triangular CuCrZr
0,8	.030	MD0005-08 (140.0114)	MD0005-38	MD0005-58 (141.0003)	MD0005-78 (140.0117)		
0,9	.035	MD0005-09	-	MD0005-59	-		
1,0	.040	MD0005-10 (140.0313)	MD0005-40	MD0005-60 (141.0008)	MD0005-80 (140.0316)	MD1005-10	MD1005-80
1,2	.045	MD0005-12 (140.0442)	MD0005-42	MD0005-62 (141.0015)	MD0005-82 (140.0445)	MD1005-12	MD1005-82
1,4	.052	MD0005-14	-	MD0005-44	-	MD0005-84	-
1,6	1/16	MD0005-16 (140.0587)	MD0005-46	MD0005-66 (141.0022)	MD0005-86 (140.0590)	MD1005-16	MD1005-86
2,0	5/64	MD0005-20 (140.0653)		MD0005-70	-	MD0005-90	-
2,4	3/32	MD0005-24 (140.0677)		MD0005-74	-	MD0005-94	-

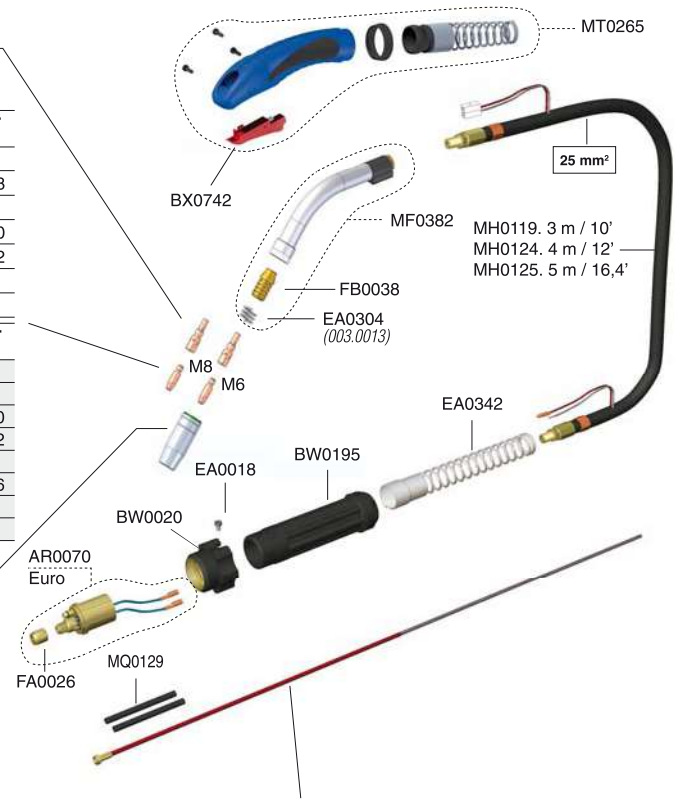


MC0265	MC0022 <i>(145.0124)</i>	MC0267	MC0023 <i>(145.0076)</i>	MC0024 <i>(145.0042)</i>	MC0025 <i>(145.0169)</i>
--------	-----------------------------	--------	------------------------------------	-----------------------------	-----------------------------



STANDARD

(REF)



Wire	red color	
1,0 ± 1,2 .040" ± .045"		Steel
	3 m / 10'	GM0510 <i>(124.0026)</i>
	4 m / 12'	GM0511 <i>(124.0031)</i>
	5 m / 16,4'	GM0512 <i>(124.0035)</i>

MH0119. 3 m / 10'
MH0124. 4 m / 12'
MH0125. 5 m / 16,4'