

# Supra® 450 Amp Water-Cooled MIG Gun

MIG GUNS



**100% Duty Cycle - CO<sub>2</sub> Carbon Dioxide**  
Suitable for Medium - Heavy Duty Fabrication.

**WELDING PROCESSES:**  
MIG (GMAW), Aluminum (GMAW)

**Standard Options Include:**

- Rear Connector
- Standard Conductor Tube – Part No. SW64-60 (Stock No. 1644-1125)
- Conduit Liner – 44 Series

**FEATURES**

- **Ergonomic Handle** to reduce operator fatigue
- **Low Bench Weight** for easy to handle gun
- **Provides Cooling Benefits** to increase “weld” life of front end consumables
- **Cool Running** for maximum efficiency and comfort
- **Large Water Lines** for maximum cooling
- **High Water Flow Rates**
- **Increased Duty Cycle** at high amperage applications
- **Color Coded Water Lines** for easy identification to water-in & water-out
- **Outer Cover** protects components from weld spatter/abrasion
- **Replacement Cable Assemblies Available** – field-repairable power cable, water-lines and gas hose
- **Quick Water Line Connections** making hook-up easy (Euro style)
- **Simplified Direct Rear Plug Connections**
- **Adapts Easily** to Miller® and Lincoln® style machines

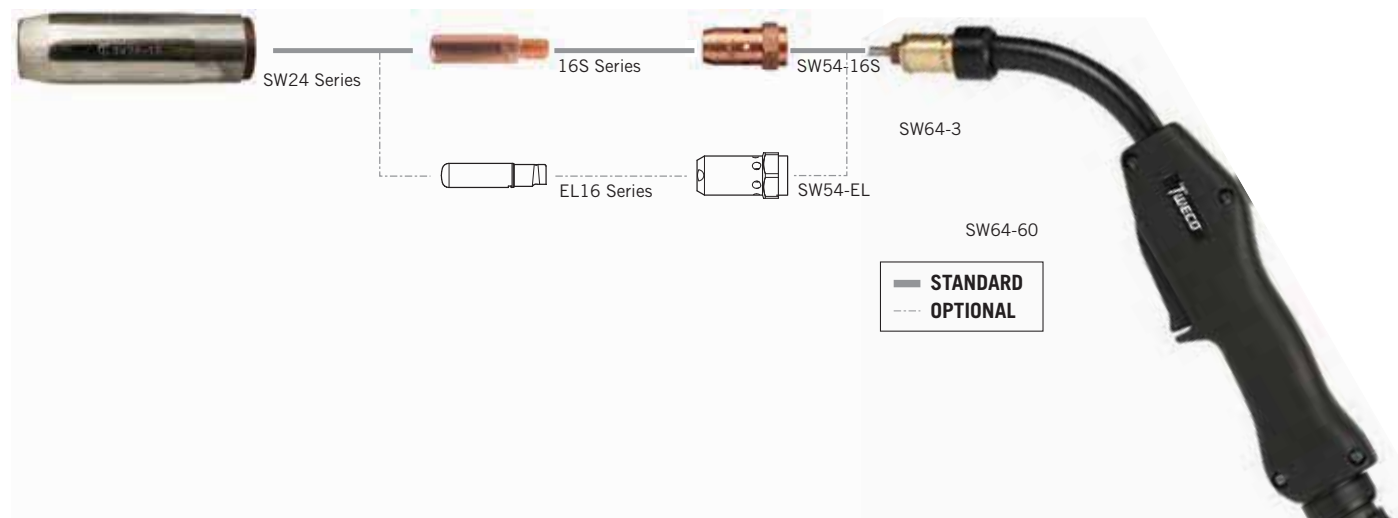
## Tweco® Style Rear Connector

Adapter kits are available to fit Tweco rear connection to most wire feeders

Wire Size	Length	Part No.	Stock No.
Up To .045" (1.2 mm)	10 ft (3 m)	SW410-116	1044-1155
	15 ft (4.6 m)	SW415-3545	1044-1152
Up To 1/16" (1.6 mm)	15 ft (4.6 m)	SW415-116	1044-1157

## Miller® Style Rear Connector

Wire Size	Length	Part No.	Stock No.
Up To 1/16" (1.6 mm)	10 ft (3 m)	SW410M-116	1044-1180
	15 ft (4.6 m)	SW415M-116	1044-1182

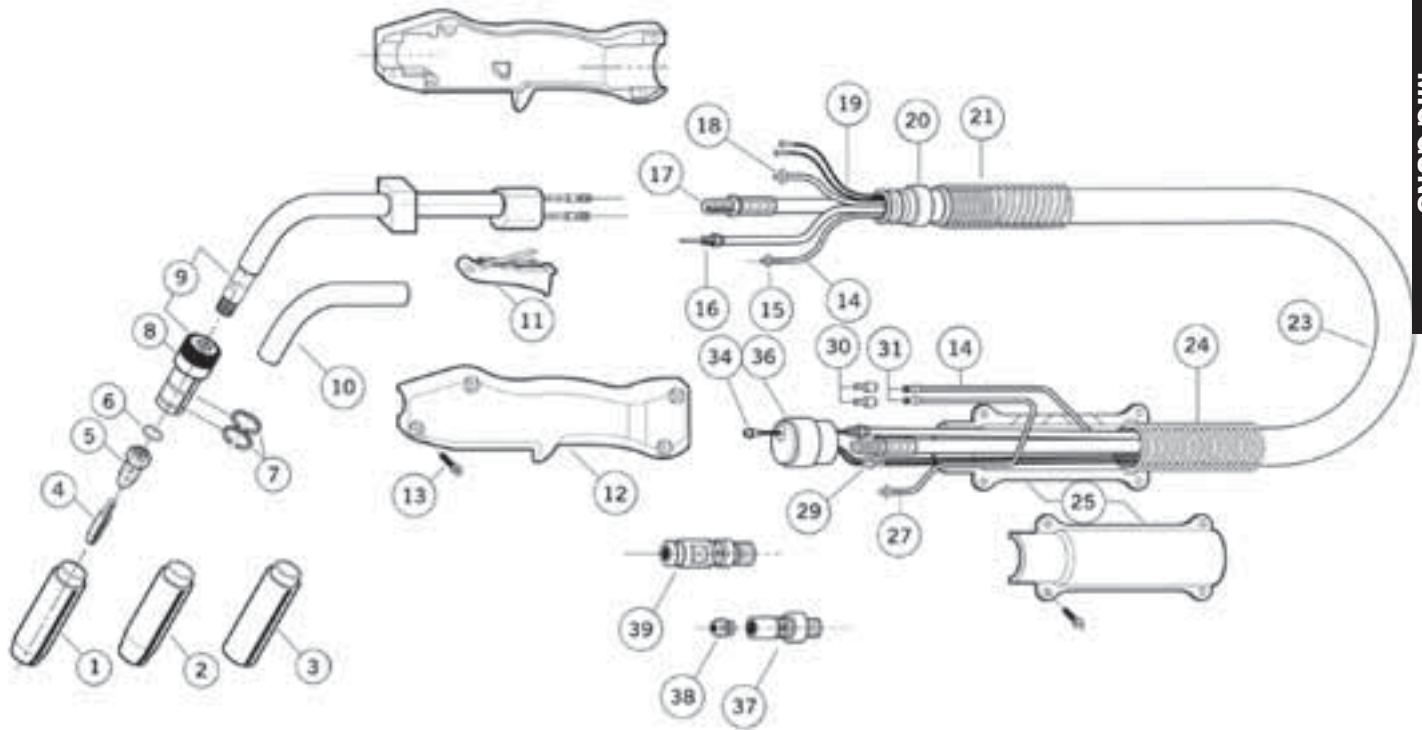


Rated Output			Wire Size	Cooled	Application Usage
Amps	Duty Cycle	Gas			
450 Amps	100%	CO <sub>2</sub> Carbon Dioxide	Up To 1/16" (1.6 mm)	Water	Heavy Duty Fabrication

**EASY FIND EASY FIND GUIDE**  
See Page 89 for Replacement Parts & Optional Accessories

Miller is a registered trademark of Illinois Tool Works, Inc. Lincoln is a registered trademark of Lincoln Electric Co. The aforementioned registered trademarks are in no way affiliated with Tweco. Tweco is registered trademark of ESAB.

# Supra<sup>®</sup> 450 Amp Water-Cooled MIG Gun Replacement Parts



MIG GUNS

#	Description	Part No.	Stock No.
1	Nozzle 11/16" (17 mm) Bore	SW24-17	1244-1025
2	Nozzle 5/8" (15.5 mm) Bore	SW24-15	1244-1026
3	Nozzle 13/16" (21 mm) Bore	SW24-21	1244-1027
4	EL16 Series Contact Tip	Refer to Page 105	
	16S Series Contact Tip	Refer to Page 104	
5	Diffuser for 16S Series Tips	SW54-16S	1540-1115
	Diffuser for EL16 Series Tips	SW54-EL	1540-1116
6	Insulating Ring	SW64-2	2044-1020
7	Nozzle Retaining Ring	SW64-R	2044-1025
8	Nozzle Holder	SW64-3	2044-1019
9	60° Conductor Tube	SW64-60	1644-1125
10	Conductor Tube Insulation	SW64-1	2044-1021
11	Trigger	SW94	2044-1018
12	Handle Assembly w/ Screws	SW84	2044-1023
13	Handle Screw	SW84-S	2044-1026
14	Water Inlet Hose (sold per foot)	SW400-WHI	1742-2240
15	Water Hose Clamp (9.5 mm)	SW134-W	2044-1002
16	10 ft (3 m) Conduit Housing	SW410-CC	1742-2235
	12 ft (4 m) Conduit Housing	SW412-CC	1742-2236
	15 ft (5 m) Conduit Housing	SW415-CC	1742-2237

#	Description	Part No.	Stock No.
17	10 ft (3 m) Power Cable	SW410-PC	1742-2230
	12 ft (4 m) Power Cable	SW412-PC	1742-2231
	15 ft (5 m) Power Cable	SW415-PC	1742-2232
18	Gas Hose Clamp (8.7 mm)	SW134-G	2044-1022
19	Control Wire (sold per foot)	SW400-CW	1742-2242
20	Front Knuckle Strain Relief	Included with item 12	
21	Front Handle Strain Relief	SW144-F	2044-1030
23	10 ft (3 m) Complete Cable	SW410	1742-2225
	12 ft (4 m) Complete Cable	SW412	1742-2226
	15 ft (5 m) Complete Cable	SW415	1742-2227
24	Rear Spring Support	SW144	2044-1000
25	Connector Case Cover w/Screws	SW184	2044-1011
27	Water Outlet Hose (sold per foot)	SW400-WHO	1742-2243
29	Female Wire Terminal Rear	SW194-F	2044-1004
30	Male Water Quick Connect	SW-QCM	2044-1005
31	Female Water Quick Connect	SW-QCF	2044-1006
34	44 Series Conduit	Refer to Page 124	
36	Connector Block (Tweco <sup>®</sup> & Miller <sup>®</sup> Rear Connections)	SW174-T	2044-1010
37	Connector Plug - Miller	174TL-M	2035-2131
38	Nipple Assembly - Miller	174M-N	2040-2184
39	Tweco Connector Plug & O-Rings	350-174	2035-2174

Miller is a registered trademark of Illinois Tool Works, Inc. Lincoln is a registered trademark of Lincoln Electric Co. The aforementioned registered trademarks are in no way affiliated with Tweco. Tweco is registered trademark of ESAB.