

Compact Eliminator[®] and Eliminator[®] MIG Gun Series

FEATURES

- **Operator appeal** with ergonomic handle to reduce operator fatigue and extended trigger length to reduce radiated heat to welder's gloved hand
- **Field repairable** split-half handle case provides access for ease of repair with field repairable mechanical cable connections available and spare trigger leads in Cablehoz[®]
- **Improved performance patented contact tip** with no threads cam style interface between contact tip & gas diffuser for increased surface contact
- **Ball & socket conductor tube design** with articulating conductor tube and three layer conductor tube construction (Copper Tube/Silicon Resin Fiberglass Insulator/Metal Jacket)
- **Wide welding applications** spray transfer & pulse welding modes straight CO₂ or mixed gases

Eliminator[®] MIG Gun Series

		Compact Eliminator® 250	Compact Eliminator 450	Standard Eliminator 450
Applications		Light/Medium Duty Fabrication	Heavy Duty Fabrication	Heavy Duty Fabrication
Standard Options	Rear Connector	■	■	■
	Dual Schedule		■	■
	Knucklehead Flexible Conductor Tube	■	■	■
Output Current		250 Amps	450 Amps	450 Amps
Duty Cycle - CO₂		60%	60%	60%
Wire Diameter		Up to .045" (1.2 mm)	Up to 1/16" (1.6 mm)	Up to 1/16" (1.6 mm)
Process	MIG	■	■	■
	Aluminum	■	■	■
	Flux-Cored Gas Shielded	■	■	■
	Flux-Cored Self Shielded	■	■	■

For Special MIG gun configurations, including special consumables, please contact Tech Service and Support.



Compact Eliminator® 250 Amp MIG Gun

MIG GUNS



60% Duty Cycle - CO₂ Carbon Dioxide
Suitable for Light/Medium Duty Fabrication.

WELDING PROCESSES:
MIG (GMAW), Aluminum (GMAW), Flux-Cored Gas Shielded, Flux-Cored Self Shielded

Standard Options Include:

- Rear Connector
- Standard Conductor Tube – Part No. EL63J-45 (Stock No. 1630-1136)
- Conduit Liner – 44 Series

Tweco® Style Rear Connector

Adapter kits are available to fit Tweco rear connection to most wire feeders

Wire Size	Length	Part No.	Stock No.
Up To .045" (1.2 mm)	12 ft (3.6 m)	ELC212-4045	1028-1108
	15 ft (4.6 m)	ELC215-4045	1028-1112

Lincoln® Style Rear Connector

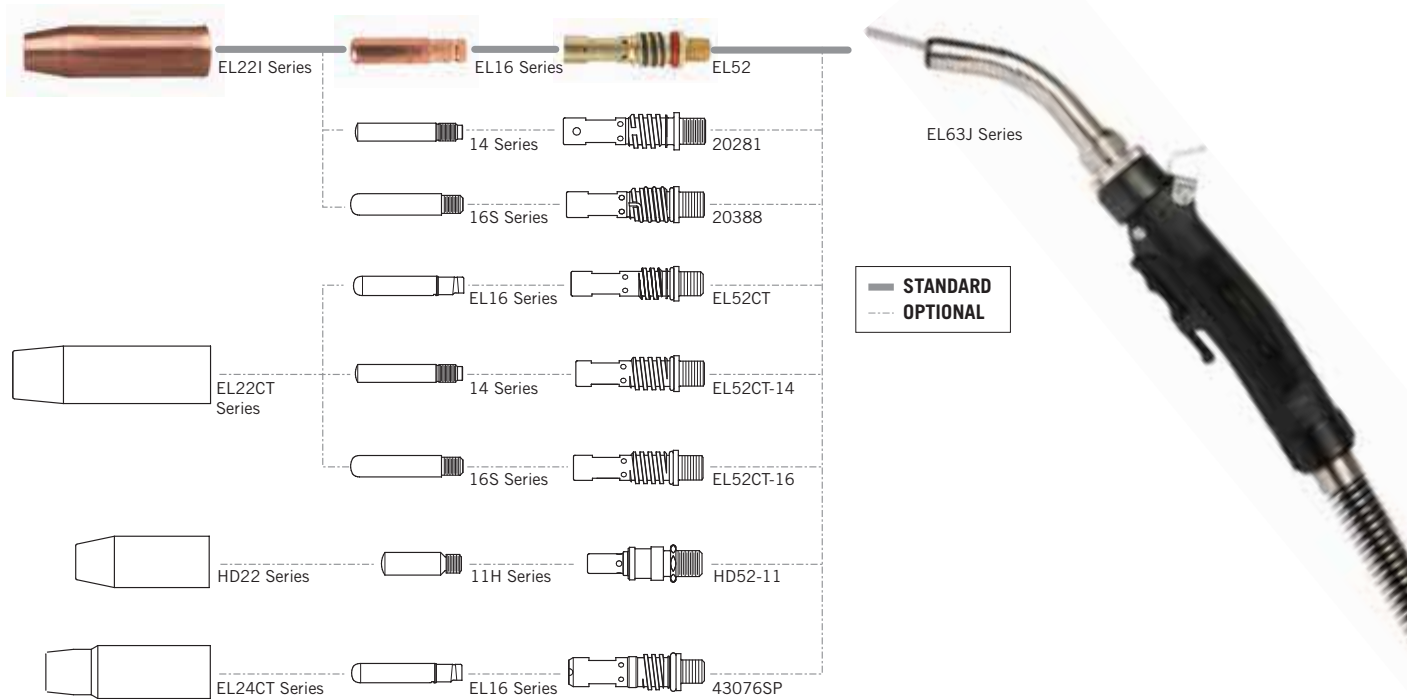
Wire Size	Length	Part No.	Stock No.
Up To .035" (1.0 mm)	15 ft (4.6 m)	ELC215L-3035	1028-1186

Miller® Style Rear Connector

Wire Size	Length	Part No.	Stock No.
Up To .045" (1.2 mm)	12 ft (3.6 m)	ELC212M-4045	1028-1158
	15 ft (4.6 m)	ELC215M-4045	1028-1162
	25 ft (7.6 m)	ELC225M-4045	1028-1170

Euro-Kwik Style Rear Connector

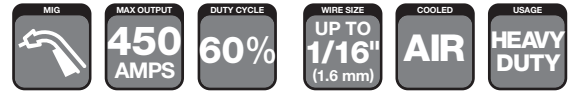
Wire Size	Length	Part No.	Stock No.
Up To .045" (1.2 mm)	15 ft (4.6 m)	XELC215-4045	1028-1137



Rated Output			Wire Size	Cooled	Application Usage
Amps	Duty Cycle	Gas			
250 Amps	60%	CO ₂ Carbon Dioxide	Up To .045" (1.2 mm)	Air	Light/Medium Duty Fabrication

EASY FIND EASY FIND GUIDE
See Page 61 for Replacement Parts & Optional Accessories

Miller is a registered trademark of Illinois Tool Works, Inc. Lincoln is a registered trademark of Lincoln Electric Co. The aforementioned registered trademarks are in no way affiliated with Tweco. Tweco is registered trademark of ESAB.



Compact Eliminator® 450 Amp MIG Gun



60% Duty Cycle - CO₂ Carbon Dioxide
Suitable for Heavy Duty Fabrication.

WELDING PROCESSES:
MIG (GMAW), Aluminum (GMAW),
Flux-Cored Gas Shielded, Flux-Cored
Self Shielded

Standard Options Include:

- Rear Connector
- Standard Conductor Tube – Part No. EL64J-60 (Stock No. 1640-1137)
- Conduit Liner – 44 Series

MIG GUNS

Tweco® Style Rear Connector

Adapter kits are available to fit Tweco rear connection to most wire feeders

Wire Size	Length	Part No.	Stock No.
Up To .045" (1.2mm)	15 ft (4.6 m)	ELC415-3545	1048-1210
Up To 1/16" (1.6mm)	15 ft (4.6 m)	ELC415-116	1048-1211
	20 ft (6.1 m)	ELC420-116	1048-1216
	25 ft (7.6 m)	ELC425-116	1048-1221

Lincoln® Style Rear Connector

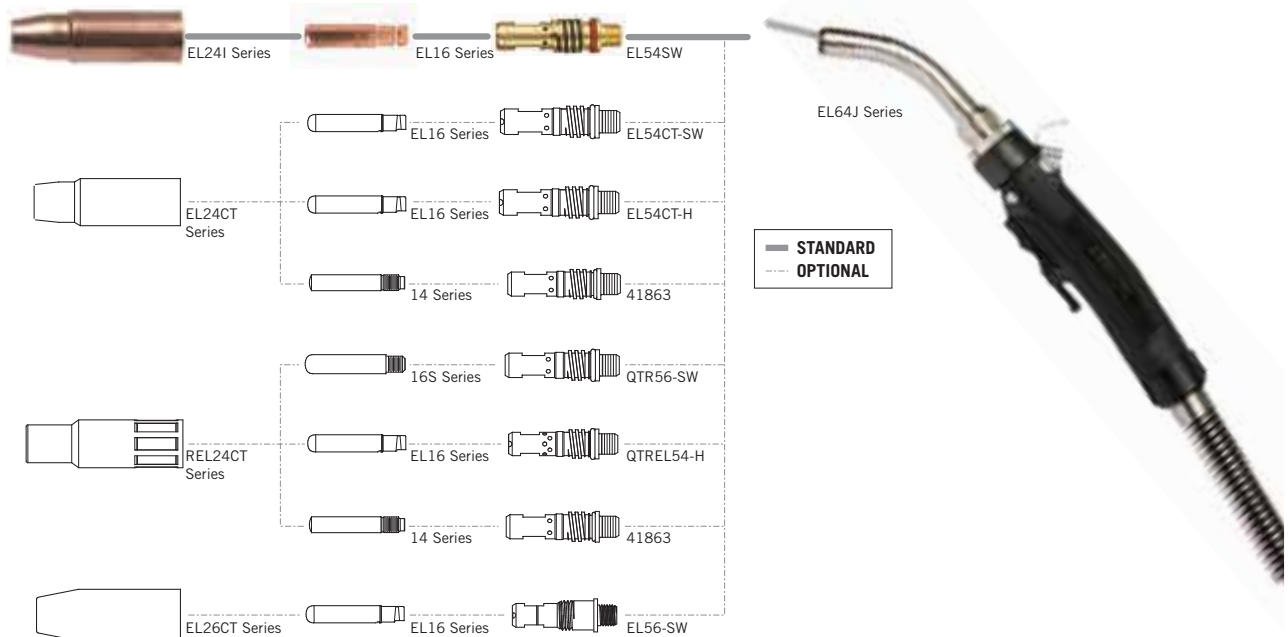
Wire Size	Length	Part No.	Stock No.
Up To .045" (1.2mm)	15 ft (4.6 m)	ELC415L-3545	1048-1285
Up To 1/16" (1.6mm)	15 ft (4.6 m)	ELC415L-116	1048-1286

Euro-Kwik Style Rear Connector

Wire Size	Length	Part No.	Stock No.
Up To .045" (1.2mm)	12 ft (3.6 m)	XELC412-3545	1048-1230
	15 ft (4.6 m)	XELC415-3545	1048-1235

Miller® Style Rear Connector

Wire Size	Length	Part No.	Stock No.
Up To .045" (1.2mm)	10 ft (3 m)	ELC410M-3545	1048-1250
	12 ft (3.6 m)	ELC412M-3545	1048-1255
	15 ft (4.6 m)	ELC415M-3545	1048-1260
Up To 1/16" (1.6mm)	15 ft (4.6 m)	ELC415M-116	1048-1261
	25 ft (7.6 m)	ELC425M-116	1048-1271



Rated Output			Wire Size	Cooled	Application Usage
Amps	Duty Cycle	Gas			
450 Amps	60%	CO ₂ Carbon Dioxide	Up To 1/16" (1.6 mm)	Air	Heavy Duty Fabrication

EASY FIND EASY FIND GUIDE
See Page 61 for Replacement Parts & Optional Accessories

Miller is a registered trademark of Illinois Tool Works, Inc. Lincoln is a registered trademark of Lincoln Electric Co. The aforementioned registered trademarks are in no way affiliated with Tweco. Tweco is registered trademark of ESAB.

Standard Eliminator® 450 Amp MIG Gun

MIG GUNS



60% Duty Cycle - CO₂ Carbon Dioxide
Suitable for Heavy Duty Fabrication.

WELDING PROCESSES:
MIG (GMAW), **Aluminum** (GMAW),
Flux-Cored Gas Shielded, Flux-Cored
Self Shielded

Standard Options Include:

- Rear Connector
- Standard Conductor Tube – Part No. EL64J-60 (Stock No. 1640-1137)
- Conduit Liner – 44 Series

Tweco® Style Rear Connector

Adapter kits are available to fit Tweco rear connection to most wire feeders

Wire Size	Length	Part No.	Stock No.
Up To .045" (1.2 mm)	15 ft (4.6 m)	EL415-3545	1048-1112

Miller® Style Rear Connector

Wire Size	Length	Part No.	Stock No.
Up To .045" (1.2 mm)	15 ft (4.6 m)	EL415M-3545	1048-1162
Up To 1/16" (1.6mm)	15 ft (4.6 m)	EL415M-116	1048-1163

Lincoln® Style Rear Connector

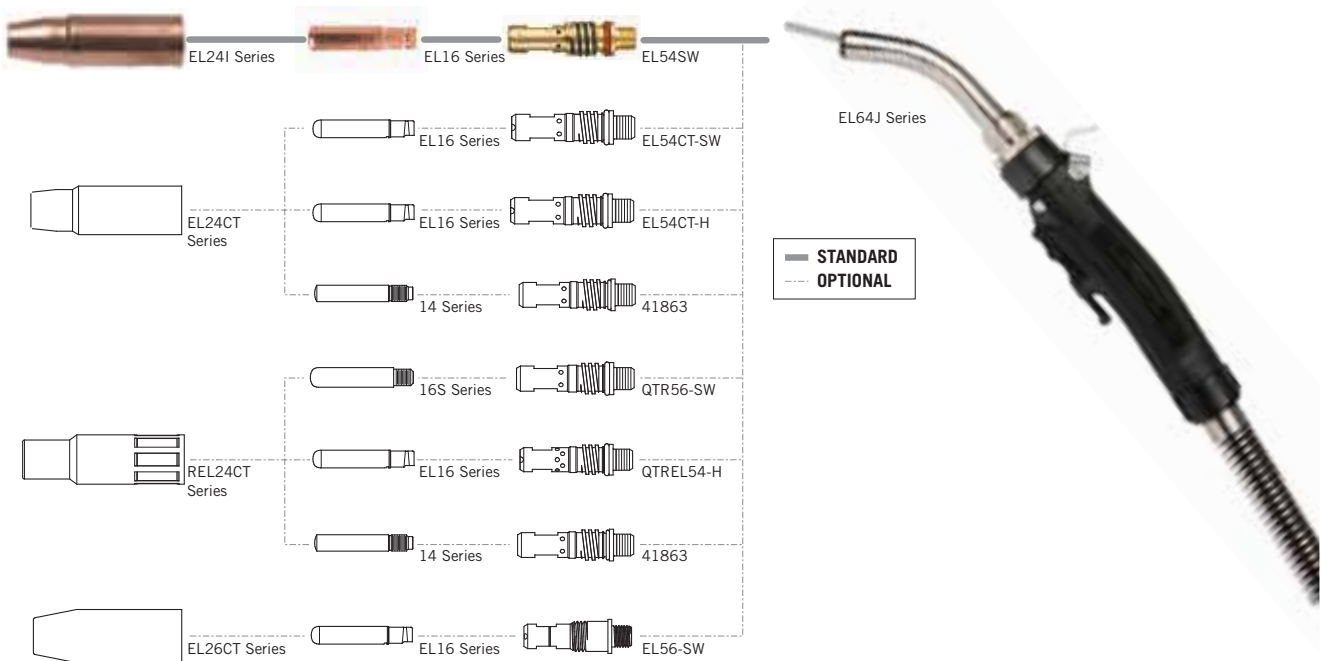
Fits Lincoln LN7, 8, 9, SP200

Wire Size	Length	Part No.	Stock No.
Up To .045" (1.2 mm)	15 ft (4.6 m)	EL415L-3545	1048-1190
Up To 1/16" (1.6mm)	15 ft (4.6 m)	EL415L-116	1048-1191

Some Lincoln wire feeders are assembled with their K1500-2 gun receiving bushing that will accept Tweco Style MIG Guns direct from the factory. Control wire Part No. MS354-DSLJ (Stock No. 2060-2137) Must be ordered separately.

Euro-Kwik Style Rear Connector

Wire Size	Length	Part No.	Stock No.
Up To .045" (1.2 mm)	15 ft (4.6 m)	XEL415-3545	1048-1140

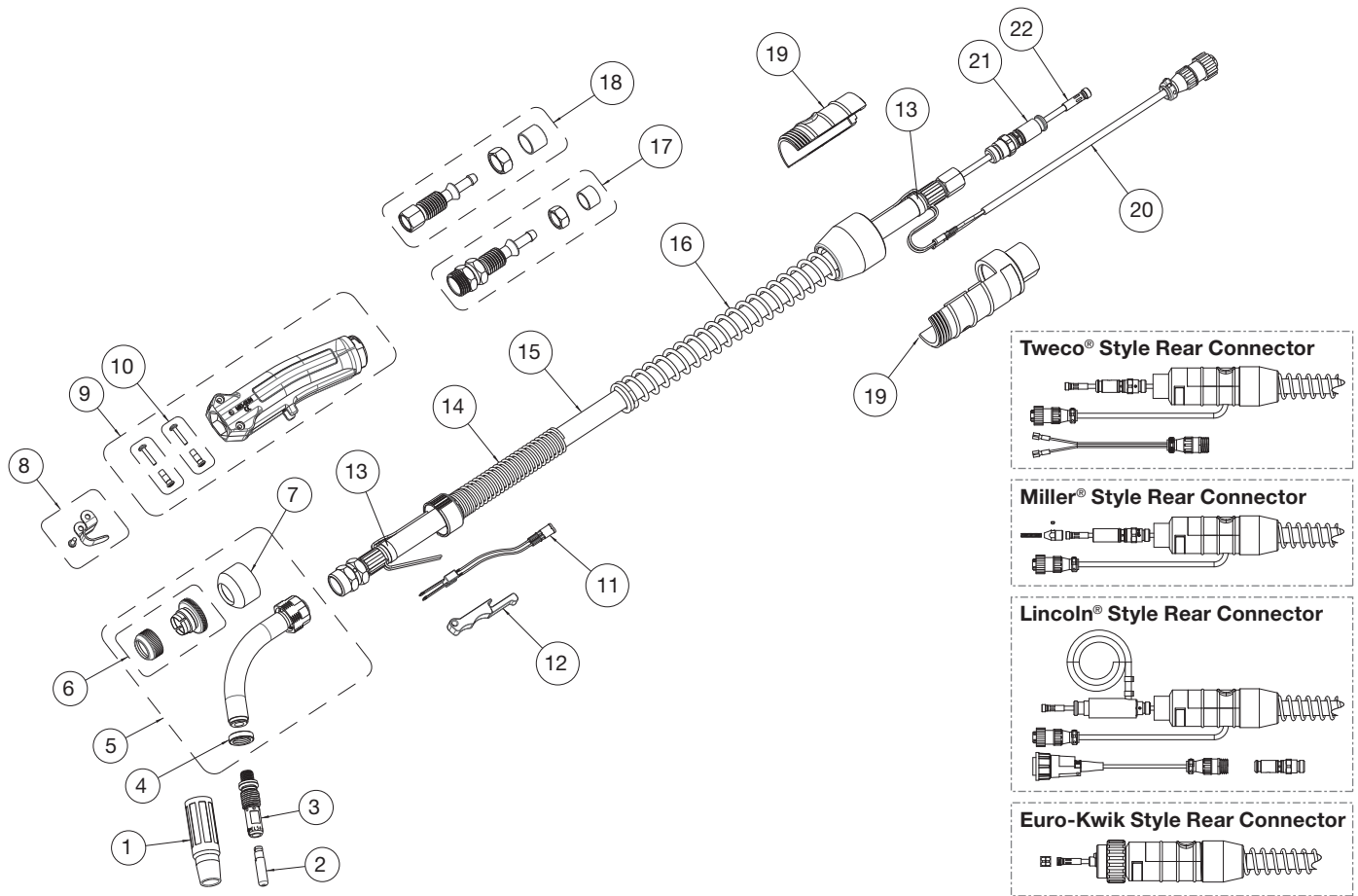


Rated Output			Wire Size	Cooled	Application Usage
Amps	Duty Cycle	Gas			
450 Amps	60%	CO ₂ Carbon Dioxide	Up To 1/16" (1.6 mm)	Air	Heavy Duty Fabrication

EASY FIND GUIDE
See Page 61 for Replacement Parts & Optional Accessories

Miller is a registered trademark of Illinois Tool Works, Inc. Lincoln is a registered trademark of Lincoln Electric Co. The aforementioned registered trademarks are in no way affiliated with Tweco. Tweco is registered trademark of ESAB.

Eliminator® Series Replacement Parts



MIG GUNS

#	Description	Compact 250 Amp	Compact 450 Amp	Standard 450 Amp
		Part No. / Stock No.	Part No. / Stock No.	Part No. / Stock No.
1	Nozzle	EL22I Series	EL24I Series	EL24I Series
2	Contact Tip	EL16 Series	EL16 Series	EL16 Series
3	Diffuser	EL52 Series	EL54 Series	EL54 Series
4	Nozzle Insulator	63J-3 / 1630-1121	63J-3 / 1630-1121	63J-3 / 1630-1121
5	Conductor Tube	EL63J Series	EL64J Series	EL64J Series
6	Nut Cover Ring & Sleeve	EL66-CR21 / 2060-2666	EL66-CR21 / 2060-2666	EL66-CR21 / 2060-2666
7	Nut Insulator	EL66-CR / 2060-2667	EL66-CR / 2060-2667	EL66-CR / 2060-2667
8	Gun Hanger	152 / 2020-2152	152 / 2020-2152	152 / 2020-2152
9	Handle (Includes Items #10 & #12)	ELC84-H / 2060-2643	ELC84-H / 2060-2643	EL86-H / 2060-2653
10	Binder Posts & Screws (2 Required)	ELC124FM / 2060-2646	ELC124FM / 2060-2646	--
11	Trigger Blade Assembly	ELC94-BL / 2060-2671	ELC94-BL / 2060-2671	EL96-B / 2060-2606
12	Trigger	ELC94 / 2060-2647	ELC94 / 2060-2647	EL96 / 2060-2605
13	Cable Clamp	136 / 2060-2690	136 / 2060-2690	136 / 2060-2690
14	Front Strain Relief Spring & Cap	MS144 / 2060-2131	MS144 / 2060-2131	EL146 / 2060-2686
15	Cablehoz Assembly, 15 ft (5 m) (Direct Plug)	ELC215R / 1720-2142	ELC415R / 1740-2527	EL415R / 1740-2537
15	Cablehoz Assembly, 15 ft (5 m) (Euro)	--	XELC415R / 1740-2532	--
16	Rear Strain Relief Spring	235RSSR / 2060-2035	235RSSR / 2060-2035	235RSSR / 2060-2035
17	Front Cable Connector Repair Kit	ELC100-2RK / 2020-2182	ELC100-4RK / 2040-2187	EL100-4RK / 2040-2188
18	Rear Cable Connector Repair Kit (Direct Plug)	--	350-170HK / 2035-2169	350-170HK / 2035-2169
18	Rear Cable Connector Repair Kit (Euro)	172X-M / 2020-2181	174X-M / 2040-2181	174X-M / 2040-2181
19	Rear Case (Direct Plug)	C6RC / 2060-2041	C6RC / 2060-2041	C6RC / 2060-2041
19	Rear Case (Euro)	X6RC / 2060-2006	X6RC / 2060-2006	X6RC / 2060-2006
20	Control Wire (Direct Plug Only)	MS354-DSM / 2060-2140	MS354-DSM / 2060-2140	MS354-DSM / 2060-2140
21	Connector Plug	Refer to Pages 92-93	Refer to Pages 92-93	Refer to Pages 92-93
22	Conduit Assembly	Refer to Pages 124-127	Refer to Pages 124-127	Refer to Pages 124-127
NS	Protective Cable Wrap (50 ft / 15 m per Box)	TCR50 / 9900-1150	TCR50 / 9900-1150	TCR50 / 9900-1150