

# Spray Master® MIG Gun & Welding Consumables

MIG GUNS

Stylish Design of Handle  
Longer Lasting Durability  
Improved Performance  
Easier to Use



**DUAL SCHEDULE**  
Optional Dual Schedule On/Off control with your gloved thumb (350 and 450 Amp only) Identified with "DSRS" Part No. suffix  
"DSRS" = Dual Schedule Rocker Switch

**LOCKING TRIGGER**  
Optional mechanical locking trigger - Identified with "LC" Part No. suffix  
"LC" = Locking Control / Locking Trigger

**TWIST-IT AND FORGET IT**  
locks in place, no threads to worry about and increases surface contact between contact tip and diffuser

## Enhanced Design of Front End Consumables

- **Eliminator® Contact Tips** increase productivity
- **Heavy Duty Contact Tip and Diffuser** for better electrical conductivity
- **Enhanced Gas Diffuser Design** designed for specific MIG gun series to improve gas coverage
- **Slip-On or Thread-On Nozzle Styles** with a choice of diameter bore sizes
- **Conduit Liners** made from either zinc-plated music wire with and without nylon coated wall or Teflon tubing – all having its benefits when running the various welding wire material
- **Contact Tips** manufactured from extruded copper alloy 122 in either threaded and/or twist lock Eliminator style

**DOUBLE TIP LIFE**  
by twisting tip to expose a new wear point

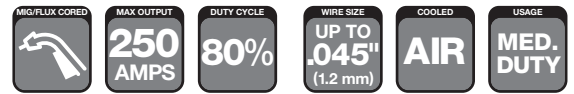


**THICK-WALLED DIFFUSER DESIGN**  
acts as "heat sink" and conducts heat away from the arc source

**LARGER CONDUCTIVE SURFACE**  
increases electrical conductivity

**12 HOLES** in the diffuser provides a more uniform gas flow over the welding wire and the weld pool for improved gas coverage

Tweco® offers a wide range of front end consumables for your MIG gun. With over 40 years of experience delivering dependable and durable MIG welding consumables, trust Tweco to fit all of your welding application needs.



# Spray Master® 250 Amp MIG Gun



**80% Duty Cycle - Mixed Gases**  
Suitable for Light/Medium Duty Fabrication.

**WELDING PROCESSES:**  
MIG (GMAW), Flux Cored (FCAW), Aluminum (GMAW)

**Standard Options Include:**

- Rear Connector and Knucklehead™ Flexible Conductor Tube
- Standard Conductor Tube – Part No. MS63-60 (Stock No. 1630-1189) on all guns up to 15 ft (4.6 m)
- Part No. MS63-45 (Stock No. 1630-1188) on all guns over 15 ft (4.6 m)
- Conduit Liner – 42 Series

MIG GUNS

## Tweco® Style Rear Connector

Adapter kits are available to fit Tweco rear connection to most wire feeders

Wire Size	Length	Part No.	Stock No.
Up To .045" (1.2 mm)	10 ft (3 m)	MS210-3545	1023-1100
	12 ft (3.6 m)	MS212-3545	1023-1101
	15 ft (4.6 m)	MS215-3545	1023-1102
	20 ft (6.1 m)	MS220-3545	1023-1103
	25 ft (7.6 m)	MS225-3545	1023-1108

## Tweco® Style (8-pin) Rear Connector

8-pin Control Wire Connector

Wire Size	Length	Part No.	Stock No.
Up To .045" (1.2 mm)	12 ft (3.6 m)	MS212E-3545	1023-1140
	15 ft (4.6 m)	MS215E-3545	1023-1141

## Lincoln® Style Rear Connector

Fits Lincoln LN7, 8, 9, SP200

Wire Size	Length	Part No.	Stock No.
Up To .045" (1.2 mm)	12 ft (3.6 m)	MS212L-3545	1023-1136

Some Lincoln wire feeders are assembled with their K1500-2 gun receiving bushing that will accept Tweco Style MIG Guns direct from the factory. Control wire Part No. MS354-DSLJ (Stock No. 2060-2137) must be ordered separately.

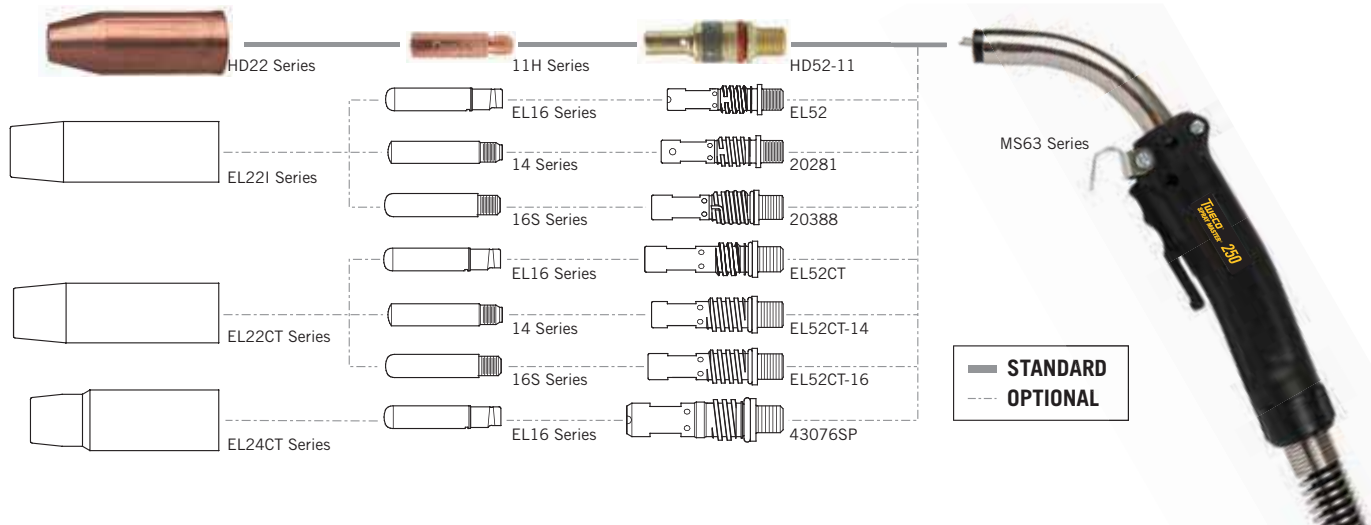
## Miller® Style Rear Connector

Wire Size	Length	Part No.	Stock No.
Up To .045" (1.2 mm)	10 ft (3 m)	MS210M-3545	1023-1110
	12 ft (3.6 m)	MS212M-3545	1023-1111
	15 ft (4.6 m)	MS215M-3545	1023-1112
	15 ft (4.6 m)	MS215M-3545EL	1023-1121
	20 ft (6.1 m)	MS220M-3545	1023-1113
	25 ft (7.6 m)	MS225M-3545	1023-1118

Suffix "EL" = Eliminator Front End Consumables

## Euro-Kwik Style Rear Connector

Wire Size	Length	Part No.	Stock No.
Up To .045" (1.2 mm)	10 ft (3 m)	MS210X-3545	1023-1125
	12 ft (3.6 m)	MS212X-3545	1023-1126
	15 ft (4.6 m)	MS215X-3545	1023-1127
	25 ft (7.6 m)	MS225X-3545	1023-1133



Rated Output			Wire Size	Cooled	Application Usage
Amps	Duty Cycle	Gas			
250 Amps	80%	Mixed	Up To .045" (1.2 mm)	Air	Light/Medium Duty Fabrication



Miller is a registered trademark of Illinois Tool Works, Inc. Lincoln is a registered trademark of Lincoln Electric Co. The aforementioned registered trademarks are in no way affiliated with Tweco. Tweco is registered trademark of ESAB.

# Spray Master® 350 Amp MIG Gun

**80% Duty Cycle - Mixed Gases**  
Suitable for Medium/Heavy Duty Fabrication.

**WELDING PROCESSES:**  
MIG (GMAW), Flux Cored (FCAW),  
Aluminum (GMAW)

**Standard Options Include:**

- Dual Schedule On/Off Control, Rear Connector and Knucklehead™ Flexible Conductor Tube
- Standard Conductor Tube – Part No. MS63-60 (Stock No. 1630-1189) on all guns up to 15 ft (4.6 m)
- Part No. MS63-45 (Stock No. 1630-1188) on all guns over 15 ft (4.6 m)
- Conduit Liner – 44 Series

MIG GUNS

## Tweco® Style Rear Connector

Adapter kits are available to fit Tweco rear connection to most wire feeders

Wire Size	Length	Part No.	Stock No.
Up To 1/16" (1.6 mm)	10 ft (3 m)	MS310-116	1036-1610
	12 ft (3.6 m)	MS312-116	1036-1613
	15 ft (4.6 m)	MS315-116	1036-1615
	15 ft (4.6 m)	MS315-116K4	1036-1715
	15 ft (4.6 m)	MS315-116DSRS	1036-1721
	15 ft (4.6 m)	MS315-116EL	1036-1725

## Lincoln® Style Rear Connector

Fits Lincoln LN7, 8, 9, SP200

Wire Size	Length	Part No.	Stock No.
Up To 1/16" (1.6 mm)	12 ft (3.6 m)	MS312L-116	1036-1646
	15 ft (4.6 m)	MS315L-116	1036-1647
	15 ft (4.6 m)	MS315L-116K4	1036-1717
	15 ft (4.6 m)	MS315L-116DSRS	1036-1722
	15 ft (4.6 m)	MS315L-116EL	1023-1727

Some Lincoln wire feeders are assembled with their K1500-2 gun receiving bushing that will accept Tweco Style MIG Guns direct from the factory. Control wire Part No. MS354-DSLJ (Stock No. 2060-2137) must be ordered separately.

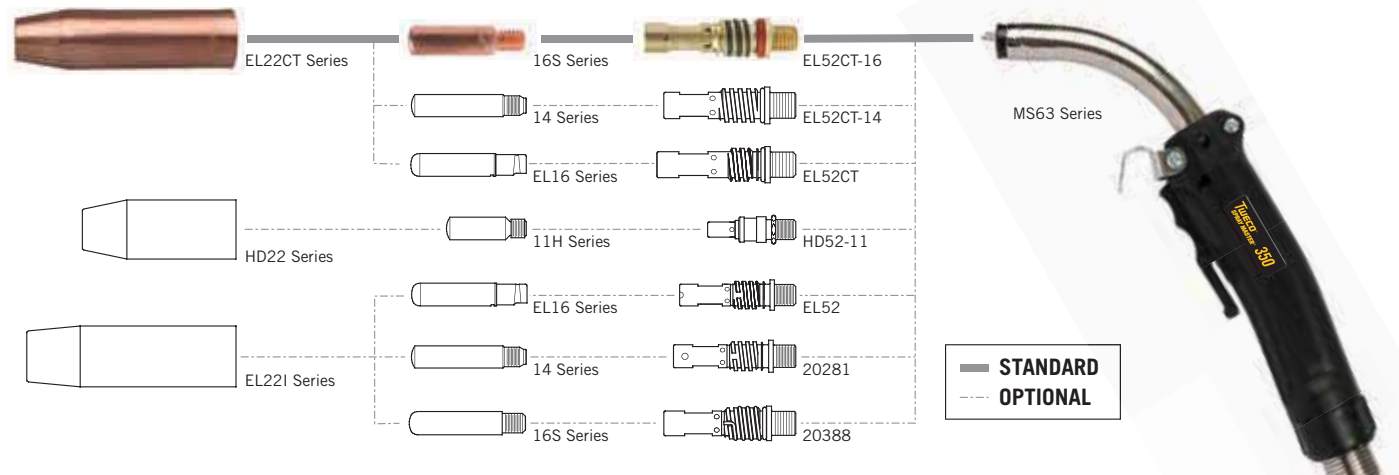
## Miller® Style Rear Connector

Wire Size	Length	Part No.	Stock No.
Up To 1/16" (1.6 mm)	10 ft (3 m)	MS310M-116	1036-1635
	12 ft (3.6 m)	MS312M-116	1036-1638
	15 ft (4.6 m)	MS315M-116	1036-1640
	15 ft (4.6 m)	MS315M-116K4	1036-1716
	15 ft (4.6 m)	MS315M-116EL	1036-1726
	25 ft (7.6 m)	MS325M-116	1036-1642

## Euro-Kwik Style Rear Connector

Wire Size	Length	Part No.	Stock No.
Up To 1/16" (1.6 mm)	15 ft (4.6 m)	MS315X-116	1036-1623
	15 ft (4.6 m)	MS315X-116EL	1036-1728

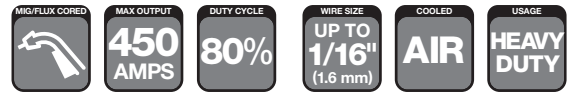
Suffix "K4" = Knucklehead Conductor Tube – Part No. MS63SFLX4-80 (Stock No. 1630-1198);  
"DSRS" = Dual Schedule Rocker Switch;  
Suffix "EL" = Eliminator Front End Consumables



Rated Output			Wire Size	Cooled	Application Usage
Amps	Duty Cycle	Gas			
350 Amps	80%	Mixed	Up To 1/16" (1.6 mm)	Air	Medium/Heavy Duty Fabrication

**EASY FIND**  
**EASY FIND GUIDE**  
See Page 14 & 15 for Replacement Parts & Optional Accessories

Miller is a registered trademark of Illinois Tool Works, Inc. Lincoln is a registered trademark of Lincoln Electric Co. The aforementioned registered trademarks are in no way affiliated with Tweco. Tweco is registered trademark of ESAB.



# Spray Master® 450 Amp MIG Gun



**80% Duty Cycle - Mixed Gases**  
Suitable for Heavy Duty Fabrication.

**WELDING PROCESSES:**  
MIG (GMAW), Flux Cored (FCAW),  
Aluminum (GMAW)

**Standard Options Include:**

- Dual Schedule On/Off Control, Locking Trigger, Rear Connector and Knucklehead™ Flexible Conductor Tube
- Standard Conductor Tube – Part No. MS64H-60 (Stock No. 1640-1319) on all guns up to 15 ft (4.6 m)
- Part No. MS64H-45 (Stock No. 1630-1318) on all guns over 15 ft (4.6 m)
- Conduit Liner – 44 Series

MIG GUNS

## Tweco® Style Rear Connector

Adapter kits are available to fit Tweco rear connection to most wire feeders

Wire Size	Length	Part No.	Stock No.
Up To 1/16" (1.6 mm)	10 ft (3 m)	MS410-116	1040-1050
	12 ft (3.6 m)	MS412-116	1040-1051
	15 ft (4.6 m)	MS415-116	1040-1052
	15 ft (4.6 m)	MS415-116K4	1040-1530
	15 ft (4.6 m)	MS415-116LM	1040-1053
	15 ft (4.6 m)	MS415-116EL	1040-1541
	20 ft (6.1 m)	MS420-116	1040-1059
	25 ft (7.6 m)	MS425-116	1040-1058

## Lincoln® Style Rear Connector

Fits Lincoln LN7, 8, 9, SP200

Wire Size	Length	Part No.	Stock No.
Up To 1/16" (1.6 mm)	10 ft (3 m)	MS410L-116	1040-1070
	15 ft (4.6 m)	MS415L-116	1040-1072
	15 ft (4.6 m)	MS415L-116K4	1040-1533
	15 ft (4.6 m)	MS415L-116DSRS	1040-1538
	15 ft (4.6 m)	MS415L-116LC	1040-1074
	15 ft (4.6 m)	MS415L-116LM	1040-1073
	15 ft (4.6 m)	MS415L-116EL	1040-1543
	25 ft (7.6 m)	MS425L-116	1040-1071

Some Lincoln wire feeders are assembled with their K1500-2 gun receiving bushing that will accept Tweco Style MIG Guns direct from the factory. Control wire Part No. MS354-DSLJ (Stock No. 2060-2137) must be ordered separately.

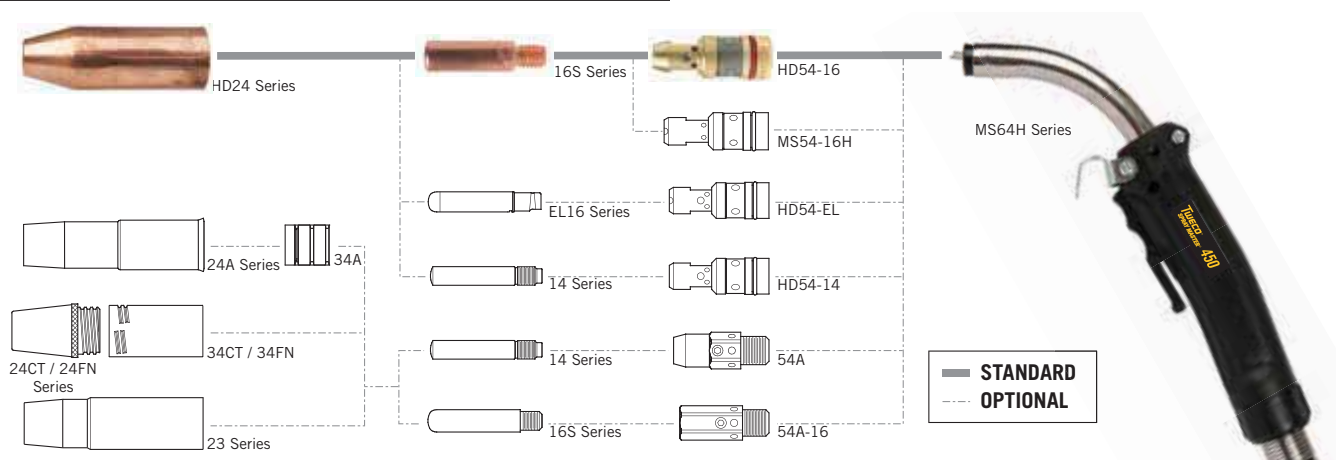
## Miller® Style Rear Connector

Wire Size	Length	Part No.	Stock No.
Up To 1/16" (1.6 mm)	10 ft (3 m)	MS410M-116	1040-1060
	12 ft (3.6 m)	MS412M-116	1040-1061
	15 ft (4.6 m)	MS415M-116	1040-1062
	15 ft (4.6 m)	MS415M-116K4	1040-1531
	15 ft (4.6 m)	MS415M-116DS	1040-1097
	15 ft (4.6 m)	MS415M-116DSRS	1040-1536
	15 ft (4.6 m)	MS415M-116LC	1040-1092
	15 ft (4.6 m)	MS415M-116LM	1040-1063
	20 ft (6.1 m)	MS420M-116	1040-1064
	25 ft (7.6 m)	MS425M-116	1040-1068
25 ft (7.6 m)	MS425M-116DS	1040-1099	

## Euro-Kwik Style Rear Connector

Wire Size	Length	Part No.	Stock No.
Up To 1/16" (1.6 mm)	10 ft (3 m)	MS410X-116	1040-1075
	12 ft (3.6 m)	MS412X-116	1040-1076
	15 ft (4.6 m)	MS415X-116EL	1040-1544
	15 ft (4.6 m)	MS415X-116	1040-1077

Suffix "K4" = Knucklehead Conductor Tube – Part No. MS64SFLX4-80 (Stock No. 1640-1308);  
 "DSRS" = Dual Schedule Rocker Switch; "LC" = Locking Trigger;  
 "LM" = Long Reach Conductor Tube – Part No. MS64H-60LM (Stock No. 1640-1317);  
 Suffix "EL" = Eliminator Front End Consumables



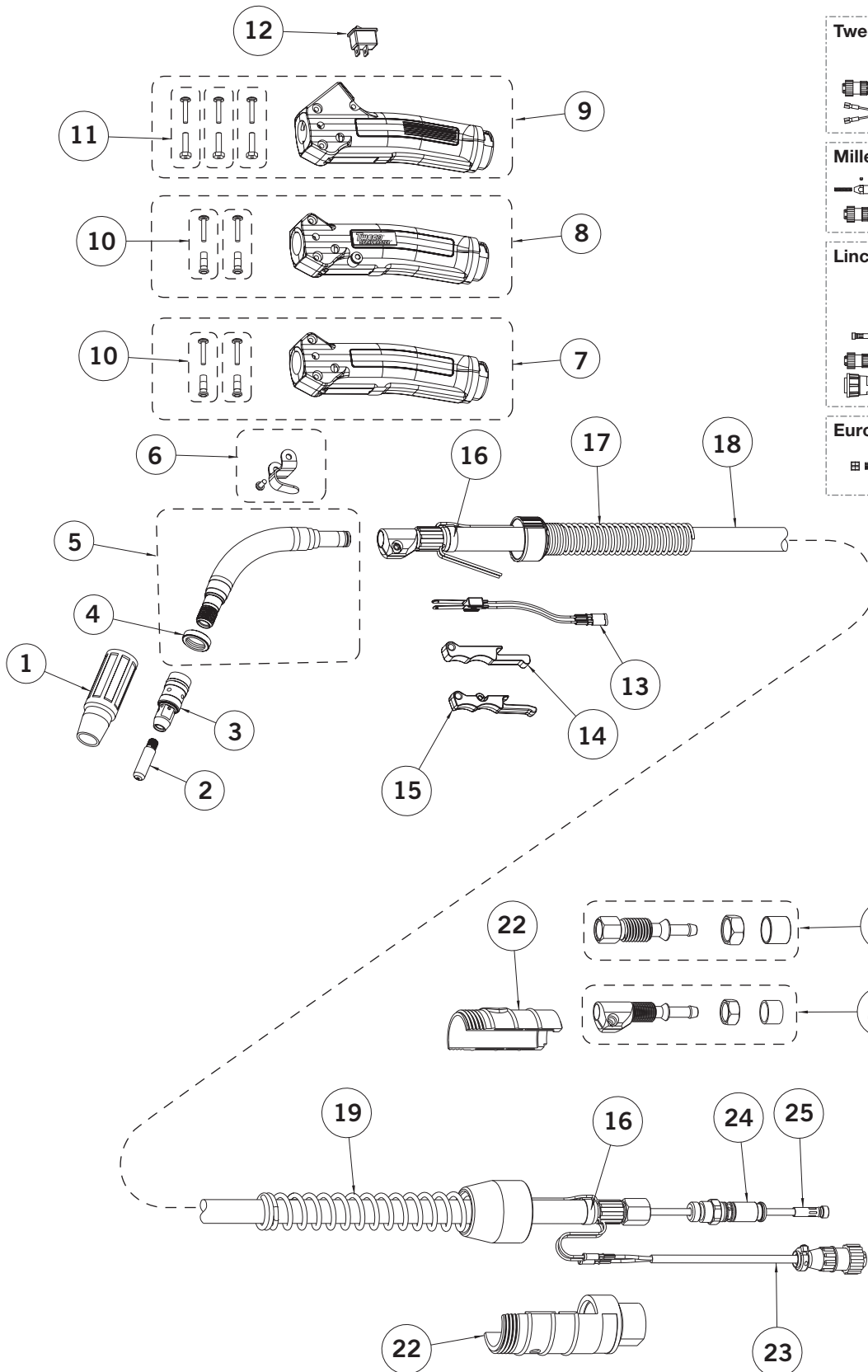
Rated Output			Wire Size	Cooled	Application Usage
Amps	Duty Cycle	Gas			
450 Amps	80%	Mixed	Up To 1/16" (1.6 mm)	Air	Heavy Duty Fabrication

**EASY FIND GUIDE**  
See Page 14 & 15 for Replacement Parts & Optional Accessories

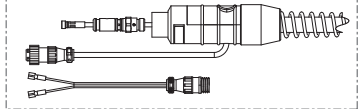
Miller is a registered trademark of Illinois Tool Works, Inc. Lincoln is a registered trademark of Lincoln Electric Co. The aforementioned registered trademarks are in no way affiliated with Tweco. Tweco is registered trademark of ESAB.

# Spray Master® MIG Gun Replacement Parts

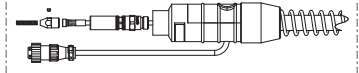
MIG GUNS



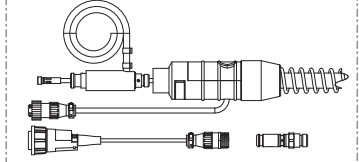
**Tweco® Style Rear Connector**



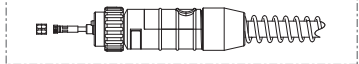
**Miller® Style Rear Connector**



**Lincoln® Style Rear Connector**



**Euro-Kwik Style Rear Connector**



Miller is a registered trademark of Illinois Tool Works, Inc. Lincoln is a registered trademark of Lincoln Electric Co. The aforementioned registered trademarks are in no way affiliated with Tweco. Tweco is registered trademark of ESAB.