

PullMaster™ 300 Amp MIG Gun

MIG GUNS



Tweco PullMaster Standard MIG Gun

Tweco PullMaster Smart MIG Gun with digital display

60% Duty Cycle - Mixed Gases
Suitable for Light - Heavy Duty Fabrication.

WELDING PROCESSES:
MIG (GMAW), Aluminum (GMAW)

Standard Options Include:

- Rear Connector
- Standard without “Smart” capability, Available with Smart Capability
- Standard Conductor Tube – Part No. PMP64EL-180 (Stock No. 1642-1140)
- Available with Optional 30° Rigid or Knucklehead™ Flexible Conductor Tube



FEATURES

- **“Smart” Capability** with digital display and one-touch controls to adjust primary parameters such as welding current, material thickness, wire feed speed or arc length trim
- **Comfortable Pistol-Grip Handle Design** for ease of operation
- **Three-Layer Conductor Tube Construction** (Copper Tube / Silicon-Resin Glass Insulator / Metal Jacket) with quick disconnect
- **Incorporates the Cablehoz®** used on other Tweco MIG guns
- **Improved Performance** with longer-life consumables
- **Heavy Duty Contact Tip and Diffuser** to act as “heat sink” in high heat applications

Standard Gun *PulseMaster MIG Guns are Standard without “Smart” Capability.*

Smart Gun *PullMaster Smart MIG Guns are used only with Tweco® PowerMaster SP machines and are available with “Smart” Capability.*

Tweco® Style Rear Connector

Adapter kits are available to fit Tweco rear connection to most wire feeders

Wire Size	Length	Part No.	Stock No.
Up To .045" (1.2 mm)	33 ft (10.1 m)	PMP333-3545	1027-1401
	50 ft (15.2 m)	PMP350-3545	1027-1402

Tweco Style Rear Connector

Wire Size	Length	Part No.	Stock No.
Up To .045" (1.2 mm)	33 ft (10.1 m)	PMP333-3545	1027-1407
	50 ft (15.2 m)	PMP350-3545	1027-1408

Legend: — STANDARD - - - - - OPTIONAL

Rated Output			Wire Size	Cooled	Application Usage
Amps	Duty Cycle	Gas			
200 Amps	60%	Mixed	Up To .045" (1.2 mm)	Air	Medium Duty Fabrication

Tweco® EPG-CR2 Control Box



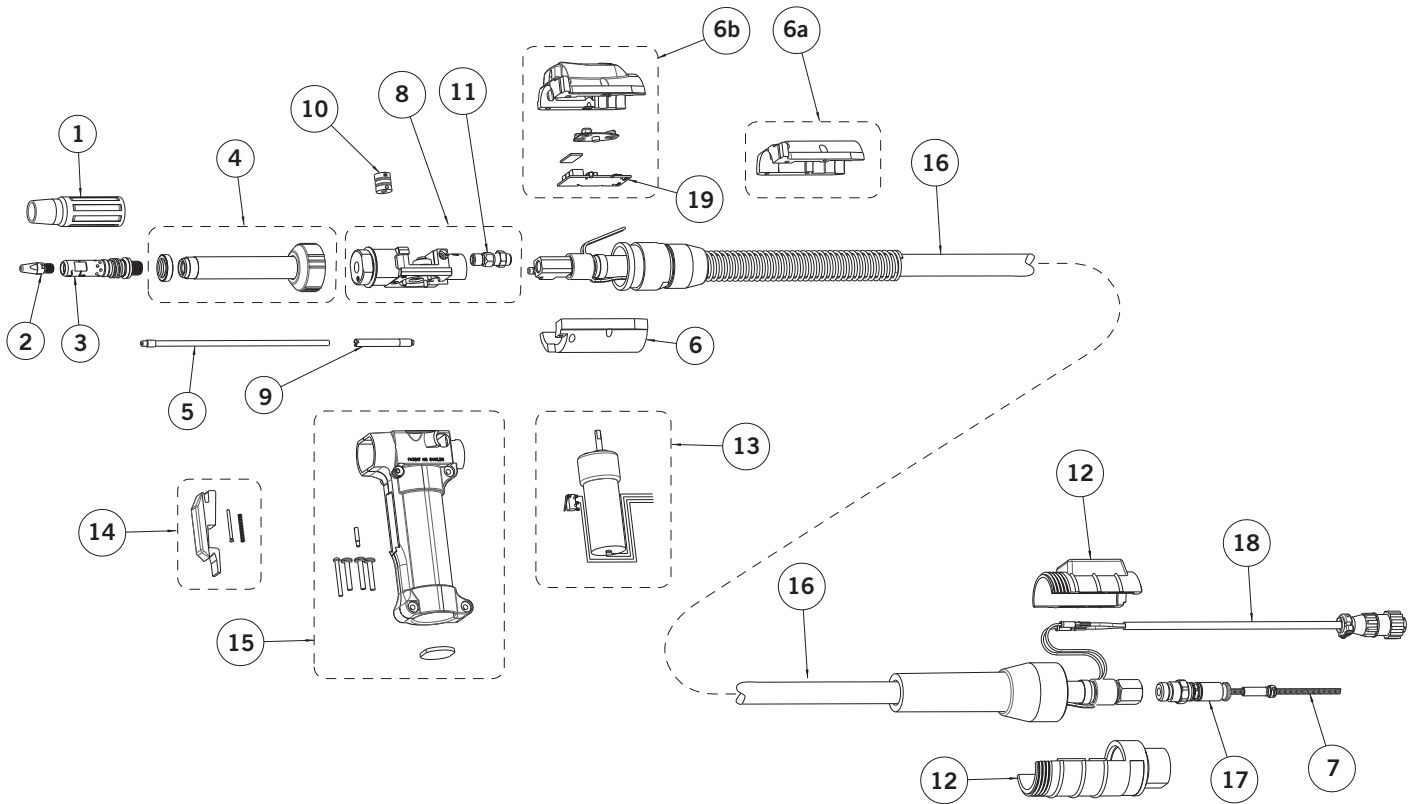
Part No. EPG-CR2
(Stock No. 1028-1291)
Used to connect standard PullMaster to most welding machines.

WELDING PROCESSES:
MIG (GMAW), Aluminum (GMAW)

Standard Options Include:

- Standard Power Cord 6 ft (2 m)
- Requires Jumper Cord - Part No. PMP354T (Stock No. 2031-2145)

PullMaster™ 300 Amp MIG Gun Replacement Parts



#	Description	Part No.	Stock No.
1	Nozzle	PMA24 Series	
2	Contact Tip	16APS Series	
3	Diffuser	PMA54-16S	1543-1106
4	Conductor Tube	PMP64EL Series	
5	Teflon Jump Liner, Flex Tube	PMP-44FLX-116	1644-1095
	Teflon Jump Liner, Rigid Tubes	PMP-44PTF-116	1644-1096
	Bronze Jump Liner for Steel Wires, Rigid Tubes	PMP-44-116	1644-1097
6a	Support Assembly Front (Std.)	EPG186	2031-2046
6b	Support Assembly Front (Including Smart Cover, PCB Membrane, Lens & Lower Support)	PMPS186	2060-2725
7	33 ft (10 m) Conduit Assembly, 3/64" - 1/16" (1.2 mm - 1.6 mm) Wire	PMP 44-116-33	1441-1125
	50 ft (15 m) Conduit Assembly, 3/64" - 1/16" (1.2 mm - 1.6 mm) Wire	PMP 44-116-50	1441-1126
	33 ft (10 m) Conduit Assembly, .035" - .045" (0.9 mm - 1.1 mm) Wire	PMP 44-3545-33	1441-1127
	33 ft (10 m) Conduit Assembly, 3/64" - 1/16" (1.2 mm - 1.6 mm) Steel Wire	PMPS 44-116-33	1441-1129
	33 ft (10 m) Conduit Assembly, .035" - .045" (0.9 mm - 1.1 mm) Steel Wire	PMPS 44-3545-33	1441-1131
8	Head Block Assembly	PMP103	2060-1726
NS	Pressure Arm Assembly	SPG103-1	2060-1727
9	Front Wire Guide Assembly	PMPS-106TA	2060-1729

#	Description	Part No.	Stock No.
10	Drive Roll .030" (0.8 mm) Wire	EPG103-2-0.8	2031-2091
	Drive Roll .035" (0.9 mm) Wire	EPG103-2-0.9	2031-2077
	Drive Roll .040" (1.0 mm) Wire	EPG103-2-1.0	2031-2023
	Drive Roll 3/64" (1.2 mm) Wire	EPG103-2-1.2	2031-2003
	Drive Roll 1/16" (1.6 mm) Wire	EPG103-2-1.6	2031-2022
	Drive Roll V-Groove 1/16" (1.6 mm) Steel Wire	EPG103-2-1.6V	2031-2134
	Drive Roll V-Groove 3/64" (1.2 mm) Steel Wire	EPG103-2-1.2V	2031-2135
	Drive Roll V-Groove .035" (0.9 mm) Steel Wire	EPG103-2-0.9V	2031-2136
	11	Power Cable Connector Assembly	--
NS	Handle Cover Assembly	EPG86-2	2031-2013
12	Rear Case Assembly	PMP-T6RC	2060-2731
13	Motor Assembly (24VDC)	PMP-M24	2060-2732
14	Trigger Lever	SPG-96TL	2060-2733
15	Handle Assembly	SPG86	2060-2734
16	Cablehoz® Assembly 33 ft (10 m) Standard	PMP300-33	2060-2750
	Cablehoz Assembly 50 ft (15 m) Standard	PMP300-50	2060-2751
17	Connector Plug	Refer to Pages 92-93	
18	Control Wire (Standard)	MS354-DSM	2060-2140
19	Replacement PCB	PM85-PCB	2060-2738
NS	Hose Clamp (Package of 5)	BG-53N04	2031-2088
	Poppet Valve Assembly	PMP-PV	2060-2737
	Miller® Control Wire	EPG354M	2031-2086
	EPG-CR2 Jumper Wire	PMP354T	2031-2145
	Protective Cable Wrap, 50 ft (15 m) per box	TCR50	9900-1150

Miller is a registered trademark of Illinois Tool Works, Inc. Lincoln is a registered trademark of Lincoln Electric Co. The aforementioned registered trademarks are in no way affiliated with Tweco. Tweco is registered trademark of ESAB.