



Mini-MIG 160 Amp MIG Gun

MIG GUNS



60% Duty Cycle - CO₂ Carbon Dioxide
Suitable for Light Duty Fabrication.

WELDING PROCESSES:
MIG (GMAW), Flux Cored (FCAW),
Aluminum (GMAW)

Standard Options Include:

- Rear Connector and Knucklehead™ Flexible Conductor Tube
- Standard Conductor Tube – Part No. 35-60-60 (Stock No. 1600-1102) on all guns
- Conduit Liner – 23 & 35 Series

Tweco® Style Rear Connector

Adapter kits are available to fit Tweco rear connection to most wire feeders

| Wire Size | Length | Part No. | Stock No. |
|----------------------|---------------|----------|-----------|
| Up To .035" (0.9 mm) | 10 ft (3 m) | 35-10 | 1000-1131 |
| | 12 ft (3.6 m) | 35-12 | 1000-1132 |
| | 15 ft (4.6 m) | 35-15 | 1000-1133 |

Miller® Style Rear Connector

| Wire Size | Length | Part No. | Stock No. |
|----------------------|---------------|----------|-----------|
| Up To .035" (0.9 mm) | 10 ft (3 m) | M23-10 | 1000-1210 |
| | 10 ft (3 m) | M35-10 | 1000-1211 |
| | 12 ft (3.6 m) | M35-12 | 1000-1213 |
| | 15 ft (4.6 m) | M35-15 | 1000-1215 |

Lincoln® Style Rear Connector

Fits Lincoln LN7, 8, 9, SP200

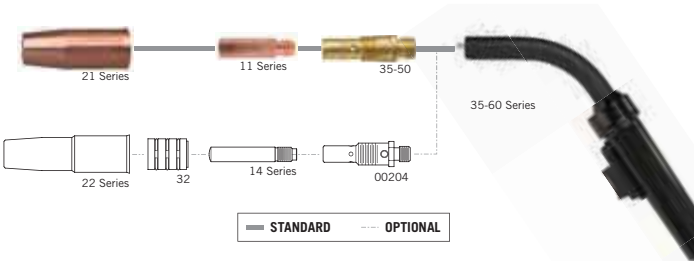
| Wire Size | Length | Part No. | Stock No. |
|----------------------|---------------|-----------|-----------|
| Up To .035" (0.9 mm) | 10 ft (3 m) | L35-10 | 1000-1231 |
| | 10 ft (3 m) | L35-10PM* | 1000-1235 |
| | 12 ft (3.6 m) | L35-12 | 1000-1231 |
| | 15 ft (4.6 m) | L35-15 | 1000-1232 |
| | 15 ft (4.6 m) | L35-15PM* | 1000-1236 |

Some Lincoln wire feeders are assembled with their K1500-2 gun receiving bushing that will accept Tweco Style MIG Guns direct from the factory. Control wire Part No. MS354-DSL-J (Stock No. 2060-2137) Must be ordered separately.
*Fits Lincoln Power MIG 140/180 machines.

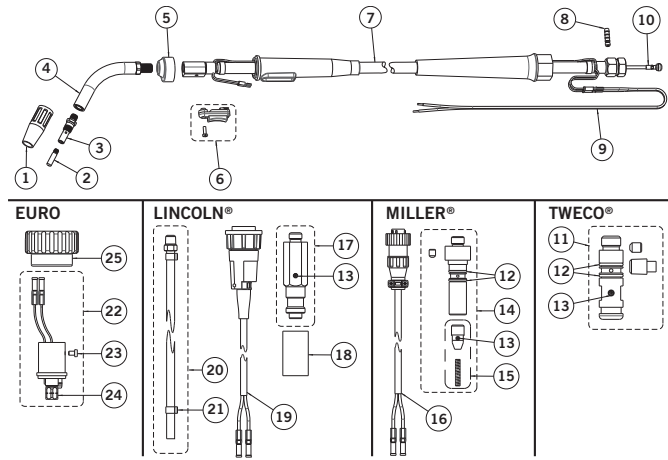
Euro-Kwik Style Rear Connector

| Wire Size | Length | Part No. | Stock No. |
|----------------------|---------------|----------|-----------|
| Up To .035" (0.9 mm) | 10 ft (3 m) | X23-10 | 1000-1621 |
| | 10 ft (3 m) | X35-10 | 1000-1631 |
| | 12 ft (3.6 m) | X35-12 | 1000-1632 |
| | 15 ft (4.6 m) | X35-15 | 1000-1633 |

For additional information on adapter kits for other manufacturers' machines, refer to Form No. TAKL-97.

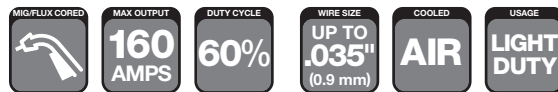


Mini-MIG Gun Replacement Parts



| # | Description | Part No. | Stock No. |
|----|---|-------------------------------|-----------|
| 1 | Nozzle | 21 Series | |
| 2 | Contact Tip | 11 Series | |
| 3 | Diffuser | 35-50 | |
| 4 | Conductor Tube | 35-60 Series | |
| 5 | Handle Cap | 35-80-A1 | 2000-2081 |
| 6 | Trigger with Screw | 35-90 | 2000-2090 |
| 7 | Cablehoz® Assembly 10 ft (3 m) (Direct Plug) | 35-010A | 1700-2126 |
| | Cablehoz Assembly 12 ft (3.6 m) (Direct Plug) | 35-012A | 1700-2127 |
| | Cablehoz Assembly 15 ft (4.6 m) (Direct Plug) | 35-015A | 1700-2128 |
| 8 | Gas Nipple | 35-170-5 | 2000-2175 |
| 9 | Control Wire | 35K350-1 | 2000-2352 |
| 10 | Conduit Assembly | Refer to Pages 124-127 | |
| 11 | Tweco® Connector Plug | 35K-174C | 2000-2169 |
| 12 | O-Ring (Package of 10) | 224S | 2064-2059 |
| 13 | Set Screw (Package of 10) | 44CS | 2040-2046 |
| 14 | Miller® Connector Plug | 170M | 2000-2810 |
| 15 | Wire Guide Assembly Only | 174M-N | 2040-2184 |
| 16 | Miller Control Wire | WM-354M | 2030-2075 |
| 17 | Lincoln® SP200 Connector Plug | TLAK-352 | 2641-2030 |
| 18 | Lincoln Insulator | LAK-352-1 | 2642-2210 |
| 19 | Lincoln Control Wire | 35SP-354 | 2000-2354 |
| 20 | Gas Hose Assembly with Clamp | AK353 | 2642-2300 |
| 21 | Gas Hose Clamp Only | AK-353-2A | 2642-2302 |
| 22 | Euro-Kwik Body Assembly | 174EX-1 | 2040-2276 |
| 23 | Screw Only | 4-MS | 2011-2004 |
| 24 | Euro-Kwik Conduit Cap Only | 174EX-1C | 2040-2279 |
| 25 | Euro-Kwik Nut | 174X-2 | 2040-2177 |
| NS | Protective Cable Wrap, 50 ft (15 m) per box | TCR50 | 9900-1150 |

Miller is a registered trademark of Illinois Tool Works, Inc. Lincoln is a registered trademark of Lincoln Electric Co. The aforementioned registered trademarks are in no way affiliated with Tweco. Tweco is registered trademark of ESAB.



Velocity Mini-MIG 160 Amp MIG Gun



60% Duty Cycle - CO₂ Carbon Dioxide
Suitable for Light Duty Fabrication.

WELDING PROCESSES:
MIG (GMAW), Flux Cored (FCAW), Aluminum (GMAW)

Standard Options Include:

- Rear Connector and Knucklehead™ Flexible Conductor Tube
- Standard Conductor Tube – Part No. VCTS35-60-60 (Stock No. 1600-1106) on all guns
- Conduit Liner – 23 & 35 Series

MIG GUNS

Tweco® Style Rear Connector

Adapter kits are available to fit Tweco rear connection to most wire feeders

| Wire Size | Length | Part No. | Stock No. |
|----------------------|---------------|----------|-----------|
| Up To .035" (0.9 mm) | 10 ft (3 m) | V35-10 | 1000-1800 |
| | 12 ft (3.6 m) | V35-12 | 1000-1801 |
| | 15 ft (4.6 m) | V35-15 | 1000-1802 |

Miller® Style Rear Connector

| Wire Size | Length | Part No. | Stock No. |
|----------------------|---------------|-----------|-----------|
| Up To .035" (0.9 mm) | 10 ft (3 m) | VM23-10 | 1000-1804 |
| | 10 ft (3 m) | VM35-10 | 1000-1805 |
| | 10 ft (3 m) | VHB35M-10 | 1000-1806 |
| | 12 ft (3.6 m) | VM35-12 | 1000-1807 |
| | 15 ft (4.6 m) | VM35-15 | 1000-1808 |

Lincoln® Style Rear Connector

Fits Lincoln LN7, 8, 9, SP200

| Wire Size | Length | Part No. | Stock No. |
|----------------------|---------------|-----------|-----------|
| Up To .035" (0.9 mm) | 10 ft (3 m) | VL35-10 | 1000-1810 |
| | 10 ft (3 m) | VHB35L-10 | 1000-1811 |
| | 12 ft (3.6 m) | VL-35-12 | 1000-1812 |
| | 15 ft (4.6 m) | VL35-15 | 1000-1813 |
| | 15 ft (4.6 m) | VL35-15PM | 1000-1814 |

Some Lincoln wire feeders are assembled with their K1500-2 gun receiving bushing that will accept Tweco Style MIG Guns direct from the factory. Control wire Part No. MS354-DSLJ (Stock No. 2060-2137) Must be ordered separately.

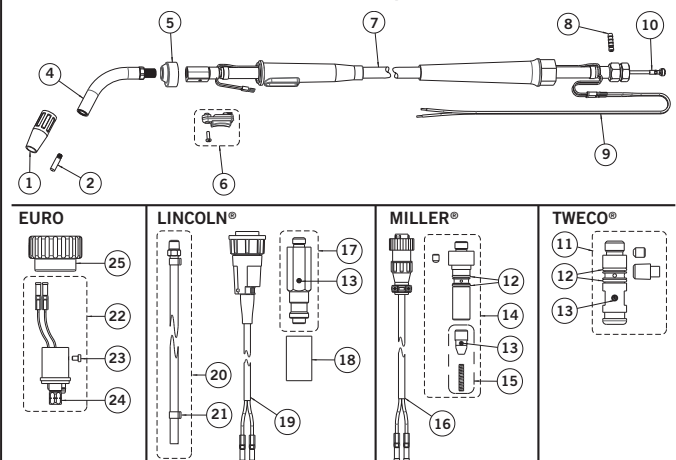
Euro-Kwik Style Rear Connector

| Wire Size | Length | Part No. | Stock No. |
|----------------------|---------------|----------|-----------|
| Up To .035" (0.9 mm) | 10 ft (3 m) | VX23-10 | 1000-1816 |
| | 10 ft (3 m) | VX35-10 | 1000-1817 |
| | 12 ft (3.6 m) | VX35-12 | 1000-1818 |
| | 15 ft (4.6 m) | VX35-15 | 1000-1819 |

For additional information on adapter kits for other manufacturers' machines, refer to Form No. TAKL-97.



V-Mini-MIG Gun Replacement Parts



| # | Description | Part No. | Stock No. |
|----|---|-------------------------------|-----------|
| 1 | Nozzle | VNS Series | |
| 2 | Contact Tip | VTS Series | |
| 4 | Conductor Tube | VCTS35-60-60 | 1600-1106 |
| 5 | Handle Cap | 35-80-A1 | 2000-2081 |
| 6 | Trigger with Screw | 35-90 | 2000-2090 |
| 7 | Cablehoz® Assembly 10 ft (3 m) (Direct Plug) | 35-010A | 1700-2126 |
| | Cablehoz Assembly 12 ft (3.6 m) (Direct Plug) | 35-012A | 1700-2127 |
| | Cablehoz Assembly 15 ft (4.6 m) (Direct Plug) | 35-015A | 1700-2128 |
| 8 | Gas Nipple | 35-170-5 | 2000-2175 |
| 9 | Control Wire | 35K350-1 | 2000-2352 |
| 10 | Conduit Assembly | Refer to Pages 124-127 | |
| 11 | Tweco® Connector Plug | 35K-174C | 2000-2169 |
| 12 | O-Ring (Package of 10) | 224S | 2064-2059 |
| 13 | Set Screw (Package of 10) | 44CS | 2040-2046 |
| 14 | Miller® Connector Plug | 170M | 2000-2810 |
| 15 | Wire Guide Assembly Only | 174M-N | 2040-2184 |
| 16 | Miller Control Wire | WM-354M | 2030-2075 |
| 17 | Lincoln® SP200 Connector Plug | TLAK-352 | 2641-2030 |
| 18 | Lincoln Insulator | LAK-352-1 | 2642-2210 |
| 19 | Lincoln Control Wire | 35SP-354 | 2000-2354 |
| 20 | Gas Hose Assembly with Clamp | AK353 | 2642-2300 |
| 21 | Gas Hose Clamp Only | AK-353-2A | 2642-2302 |
| 22 | Euro-Kwik Body Assembly | 174EX-1 | 2040-2276 |
| 23 | Screw Only | 4-MS | 2011-2004 |
| 24 | Euro-Kwik Conduit Cap Only | 174EX-1C | 2040-2279 |
| 25 | Euro-Kwik Nut | 174X-2 | 2040-2177 |
| NS | Protective Cable Wrap, 50 ft (15 m) per box | TCR50 | 9900-1150 |

| Rated Output | | | Wire Size | Cooled | Application Usage |
|--------------|------------|--------------------------------|----------------------|--------|------------------------|
| Amps | Duty Cycle | Gas | | | |
| 160 Amps | 60% | CO ₂ Carbon Dioxide | Up To .035" (0.9 mm) | Air | Light Duty Fabrication |

Miller is a registered trademark of Illinois Tool Works, Inc. Lincoln is a registered trademark of Lincoln Electric Co. The aforementioned registered trademarks are in no way affiliated with Tweco. Tweco is registered trademark of ESAB.