

Pivot Angle Magnetic Fixture

Tacking Welds Just Got Easier

- Designed for repetitive work at uncommon angles
- Convenient single lock handle makes it fast and easy to select an angle



Order Number
• K3310-1

Literature
E14.800

Multi Angle Fixture

Tacking Welds Just Got Easier

- Set up in seconds
- Magnet technology allows for complete on/off control and precise positioning
- Easy to position on flat or round stock



Order Number
• K3309-1

Literature
E14.800

Mini Multi Angle Fixture

Tacking Welds Just Got Easier

- Designed for small steel parts
- Pipe notch for use on round stock
- No batteries or electricity required



Order Number
• K3318-1

Literature
E14.800

Manual Hand Lifter

Get a Handle on Steel

- For small part lifting and sheet dragging
- Work faster and more efficiently with fewer injuries
- No batteries or electricity required



Order Number
• K3311-1

Literature
E14.800

Electric Hand Lifter

Battery Powered Steel Handling

- No cords to clutter the workplace
- For small part handling and removing parts from burn tables
- Battery power light blinks when battery needs recharging
- 60 lb (27.2 kg) lifting force



Order Number
• K3312-1

Literature
E14.800

Stainless Steel & Aluminum Welding

3 X 7 Row Stainless Steel Wire Brush

This handy toothbrush style is just right for light cleaning on stainless steel in confined or hard to reach areas.

2 X 9 Row Stainless Steel Wire Brush

A slight curve in the handle improves grip. Ideal for general or light cleaning on stainless steel.

3 X 19 Row Stainless Steel Wire Brush

This general purpose brush is intended for long life and efficient surface cleaning on stainless steel.



Length, in. (mm)

- 7.5 [191] [3x7 Brush]
- 8.5 [216] [2x9 Brush]
- 13.75 [349] [3x19 Brush]

Order Number

- K3179-1 [3x7 Brush]
- K3180-1 [2x9 Brush]
- K3181-1 [3x19 Brush]

Alloy Welding

3 X 7 Row Brass Wire Brush for Aluminum

This compact toothbrush style can be used for light cleaning on aluminum in confined or hard to reach areas. Brass bristles are easy on aluminum surfaces.

2 X 9 Row Brass Wire Brush for Aluminum

The slightly curved handle improves grip for general light cleaning on aluminum. Brass bristles gently remove oxide layer on aluminum.



Length, in. (mm)

- 7.5 [191] [3x7 Brush]
- 8.5 [216] [2x9 Brush]

Order Number

- K3182-1 [3x7 Brush]
- K3183-1 [2x9 Brush]

Carbon Steel Welding

3 X 19 Row Carbon Steel Wire Brush

Select this popular tempered steel bristle pattern for efficient general cleaning on carbon steels.

4 X 16 Row Carbon Steel Wire Brush

Tempered steel bristles make fast work of rust, mill scale and paint on carbon steels. Comfortable curved handle.



Length, in. (mm)

- 13.75 [349] [3x19 Brush]
- 9.5 [241] [4x16 Brush]

Order Number

- K3184-1 [3x19 Brush]
- K3185-1 [4x16 Brush]

Combination Packs

Wire Brush Three Pack

This compact toothbrush style set is easy to stow in your bag and perfect for small projects. Includes brass bristle brush for aluminum, stainless bristle brush for stainless steel and a nylon bristle brush for general cleaning on carbon steel.



Length, in. (mm)

- 7.5 [191]

Order Number

- K3189-1

Chipping Hammer

Tackle Dirt and Slag Head-On

- Shock reducing spiral handle with hook
- Head includes spike and flat sides



Processes

- Stick
- Flux-Cored

Order Number

K4022-1

Literature

E14.742

Welper®

Multi-Use MIG Tool

- Designed for MIG welding operations with eight functions in a single pair of pliers
- Spring loaded for easy opening and closing
- Comfortable handle
- Chrome vanadium steel



Processes

- MIG
- Flux-Cored

Order Number

K4014-2

Literature

E14.740

Welding Pliers

Single Tool, Multiple Functions

- Up to six functions
- Spring loaded for easy opening and closing
- Heat treated for durability



Processes

- MIG

Order Number

K4014-1

Literature

E14.741

Welding Curtain, 6 x 6 ft. (1.8 x 1.8 m)

Bring the Curtain Down on Sparks and Spatter

- Intended to be hung vertically
- Rated for temperatures up to 1022°F (550°C)
- Protects workers from injury and parts and equipment from damage



Meets Requirements

- FM approved for ANSI/FM 4950

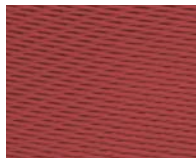
Order Number

K3252-1

Welding Blanket, 6 x 6 ft. (1.8 x 1.8 m)

We've Got You Covered

- Intended to be used horizontally
- Rated for temperatures up to 1,022°F (550°C)
- Protects workers from injury and parts and equipment from damage
- Easy to position in any shop



Meets Requirements

- FM approved for ANSI/FM 4950

Order Number

K3253-1

High Temperature Welding Blanket, 6 x 6 ft. (1.8 x 1.8 m)

Keep the Heat Off

- Intended to be used horizontally
- Rated for temperatures up to 2012°F (1,100°C)
- Protects workers from injury and parts and equipment from damage
- Easy to position in any shop



Meets Requirements

- FM approved for ANSI/FM 4950

Order Number

K3254-1

Hydroguard® Rod Canister

Easy to Carry. Easy to Protect.

- Protect and carry 10 lb. (4.5 kg) of stick electrode up to 14 in. (355.6 mm) in length
- Rubber seal makes the container moisture-resistant



Processes
• Stick

Order Number
K3166-1
K3167-1 (strap)

Hydroguard® Portable Welding Rod Oven


Outstanding Moisture Resistance for Improved Weld Quality

- Transport a maximum of 10 lb. (4.5 kg) of up to 18 in. (457.2 mm) electrode
- Maintains electrodes at a constant 300°F (149°C) temperature
- Power-On light to visually confirm operation



Processes
• Stick

Output
Preset at 300°F (149°C)

Input


Order Number
K2939-1 (115V)
K2939-2 (230V)

Literature
E14.701

Hydroguard® Bench Rod Oven


Outstanding Moisture Resistance for Improved Weld Quality

- Circular Shape Directs Airflow
- Adjustable Thermostat
- Flexible Interior Configuration
- Variable Moisture Vent
- Handy Shelf
- Data Logger Capable



Processes
• Stick Electrode
• MIG Wire

Output
100-550°F
(38-288°C)

Input


Order Number
K2942-1 (120V)
K2942-2 (240/480V)
K3148-1 (Thermometer Kit)

Literature
E14.702

NOTE » Date Logger Capable