

Aristo[®] RoboFeed 3004HW

Small feeder for Hollow Wrist robots



- Aristo RoboFeed 3004HW is specially designed for use with hollow wrist robots that have the torch package inside the robot arm
- Lightweight and small size are needed to allow hollow wrist robots to use their high accelerations and perform all motions
- Completely enclosed feeding unit provides operational functions for gas purge and wire inching
- The PCB is separate from the feeder housing in order to provide a small, lightweight unit
- The Aristo FeedControl box allows for easy maintenance
- Sturdy design with plastic cover for reduced weight and ideal for use in tough environments
- The digitally controlled feed unit performs accurate speed control with the aid of a pulse encoder on speeds ranging from 31.5 to 1181 ipm (0.8 to 25 m/min)
- The 4-roll feed mechanism with grooves in both feed and pressure rolls gives stable feeding and low wear on the wire, all of which help to ensure reliable wire feeding
- Supports Aristo SuperPulse and Swift Arc Transfer processes including QSet, the Short Arc welding process with artificial intelligence



Ordering Information

Aristo RoboFeed 3004 HW..... 0465040880
 Aristo FeedControl HW..... 0461080881

Options and Accessories

Cable kit assembly..... 0465412880

Connection cable RoboFeed 3004HW to FeedControl HW, 16.5 ft (5 m).

Mounting bracket for RoboFeed 3004 HW on:

ABB IRB 1520 ID0465381880
 ABB IRB 1600 ID0465388880
 ABB IRB 2600 ID0465401880

Yaskawa Motoman MA 14000465391880
 Yaskawa Motoman MA 19000465394880
 Fanuc ArcMate 100 iC0465398880
 Fanuc ArcMate 120 iC0465404880

See additional options and accessories on page 11.

Specifications

| | Aristo RoboFeed 3004HW |
|------------------------------|-----------------------------------|
| Input voltage, V, Hz | 60 DC (PWM) |
| Max load @ 60% duty cycle | 500 A |
| Max load @ 100% duty cycle | 280 A |
| Drive mechanism | 4 WD |
| Drive rollers, in. (mm) | 1.2 (30) |
| Wire feed speed, ipm (m/min) | 31.5 - 1181 (0.8-30) |
| Dimensions, L x W x H | 10 x 7 x 8.7 (251 x 182 x 221 mm) |
| Weight | 12 lbs (5.4 kg) |
| Speed control | Pulse encoder |
| Enclosure class | IP 2X |
| Standards | IEC 60974-5, IEC 60974-10 |
| Wire Dimensions | |
| Steel in. (mm) | .025 - 1/16 (0.6-1.6) |
| Stainless steel, in. (mm) | .025 - 1/16 (0.6-1.6) |
| Aluminum, in. (mm) | .040 - 1/16 (1.0-1.6) |
| Cored wire, in. (mm) | .030 - 1/16 (0.8-1.6) |

Aristo® RoboFeed 3004w/HW

Wear parts and accessories



Aristo RoboFeed 3004w/HW Wear Parts

| Wire Diameter in. (mm) | Wire Type | 1 Feeder Roller | 2 Inlet Nozzle | 3 Intermediate Nozzle | 4 Outlet Nozzle | Groove Type | Marking |
|--------------------------------|--------------|-----------------------|----------------------|-----------------------------|-----------------------|----------------|-----------------|
| .023/.030 (0.6/0.8) | Fe, Ss, C | 0459052001 | 0455049001 | 0455072002 | 0469837880 | V | 0.6 S2 & 0.8 S2 |
| .030/.035-.040 (0.8/0.9-1.1) | Fe, Ss, C | 0459052002 | 0455049001 | 0455072002 | 0469837880 | V | 0.8 S2 & 1.0 S2 |
| .035-.040/.045* (0.9-1.0/1.1)* | Fe, Ss, C | 0459052003 | 0455049001 | 0455072002 | 0469837880 | V | 1.0 S2 & 1.2 S2 |
| .052/.1/16 (1.3/1.6) | Fe, Ss, C | 0459052013 | 0459049001 | 0455072002 | 0469837880 | V | 1.4 S2 & 1.6 S2 |
| .035-.040/.045 (0.9-1.0/1.1) | C | 0458825001 | 0455049001 | 0455072002 | 0469837880 | V-K | 1.0 R2 & 1.2 R2 |
| .045/.052 (1.1/1.3) | C | 0458825002 | 0455049001 | 0455072002 | 0469837880 | V-K | 1.2 R2 & 1.4 R2 |
| 1/16 (1.6) | C | 0458825003 | 0459049001 | 0455072002 | 0469837880 | V-K | 1.6 R2 |
| .030/.035-.040 (0.8/0.9-1.0) | Al | 0458824001 | 0455049001 | 0456615001 | 0469837881 | U | 0.8 A2 & 1.0 A2 |
| .045/1/16 (1.1-1.6) | Al | 0458824003 | 0455049001 | 0456615001 | 0469837881 | U | 1.2 A2 & 1.6 A2 |

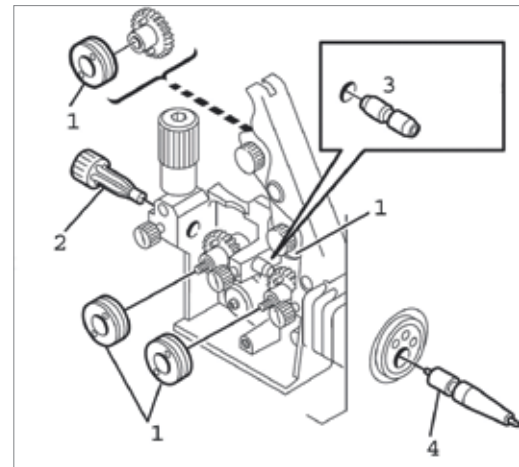
C = cored wire

* as delivered

K = knurled groove



Aristo FeedControl is equipped with a box to connect welding cable and water hoses outside the electronics compartment.



Aristo RoboFeed 3004w/HW Accessories

Connection Cables

| | |
|----------------------------------|------------|
| 16.5 ft (5 m), air-cooled..... | 0740538890 |
| 33 ft (10 m), air-cooled..... | 0740538881 |
| 49 ft (15 m), air-cooled..... | 0740538882 |
| 16.5 ft (5 m), water-cooled..... | 0740538895 |
| 33 ft (10 m), water-cooled..... | 0740538886 |
| 49 ft (15 m), water-cooled..... | 0740538887 |
| 82 ft (25 m), water-cooled..... | 0740538888 |
| 115 ft (35 m), water-cooled..... | 0740538889 |

| | |
|----------------------------------|------------|
| Assembly bracket universal..... | 0461038880 |
| Quick connector MarathonPac..... | F102440880 |

Wire Conduits

| | |
|-------------------------|------------|
| 6 ft (1.8 m)..... | F102437881 |
| 10 ft (3 m)..... | F102437882 |
| 12.5 ft (3.8 m)..... | F102437889 |
| 15 ft (4.5 m)..... | F102437883 |
| Wire 19.7 ft (6 m)..... | F102437887 |
| 21.3 ft (6.5 m)..... | F102437890 |
| 26 ft (8 m)..... | F102437884 |
| 39.4 ft (12 m)..... | F102437885 |